



2015-2016 Transfer Student Handbook





SCHOOL *of* SOCIAL SCIENCES

UNIVERSITY *of* CALIFORNIA • IRVINE

TABLE OF CONTENTS

Social Sciences Undergraduate	
Student Affairs (SSUSA)	3

GETTING STARTED

What is a UCInetID?	4
Activate your UCInetID	4
UCI Email	4
Preferred Name	4
E-mail Etiquette.....	4
Schedule of Classes (WebSOC)	5
Key Terms	5
Class Registration (WebReg)	6
Video Tutorial	6
Enrollment Menu	7
Waiting List Menu	8
Student Billing System.....	8
Billing Statement.....	8
PACE Payment Plan (Installment Payments)	8
For New Students	9
For Students with Financial Aid	9
Health Insurance	9
Student Access	9
DegreeWorks	9

SOCIAL SCIENCE REQUIREMENTS

University Requirements.....	10
School of Social Sciences Requirements.....	10
IGETC	11
General Education Requirements.....	11
Individual Degree Check by Major	
<i>Anthropology</i>	13
<i>Chicano/Latino Studies</i>	14
<i>Business Economics</i>	15
<i>Quantitative Economics</i>	16

<i>Economics</i>	17
<i>International Studies</i>	18
<i>Political Science</i>	19
<i>Psychology</i>	20
<i>Social Policy & Public Service</i>	21
<i>Sociology</i>	22
What can I do with a Social Sciences major?	23
Career Strategies	23
Change of Major Requirements	24
Minors.....	25
Certificates	25
Transfer Units	26
ASSIST	26
College Board Advanced Placement.....	26
International Baccalaureate Exams	26

SCHOOL POLICIES

Student Affairs Office Functions.....	27
Study Abroad Advising.....	27
Academic Probation/Contract	27
Academic Dishonesty	28
Dean's Signature.....	28
Cancellation/Withdrawal	28
Readmission	28
Poor Academic Standing	29
Part-Time Student Status.....	29
Add/Drop/Change Policy	29
Retake Policy	29
Transcript Notations.....	30
Petitions.....	30
Prerequisite Clearance	30

STUDENT RESOURCES

Student Resources List	31
------------------------------	----



Undergraduate Student Affairs Office

<http://www.undergrad.socsci.uci.edu/offices/studentaffairs.php>

School Majors and Minors

Majors with an asterisk (*)
also offer a minor

- Anthropology*
- Chicano/Latino Studies*
- Cognitive Sciences (B.S.)
- Business Economics
- Economics*
- Quantitative Economics
- International Studies*
- Political Science*
- Psychology*
- Social Policy & Public Service
- Sociology*

Offered as Minors Only

- Conflict Resolution
- Hearing & Speech Sciences
- Linguistics
- Medical Anthropology



Office Information

Academic Counselors

- ✓ Helen Morgan, *Director*
- ✓ Chika Kono, *Associate Director*
- ✓ Kurt Hessinger
- ✓ Estela Magaña
- ✓ Karen Chan
- ✓ Katrina Tomas

Peer Academic Advisors

Michelle Doan
Anthropology and Psychology

Rachelle Quintela
Business Economics

Jackie Siu
Business Economics

Cassie Zhang
Business Economics

Zoey Xiong
Quantitative Economics

Yareli Castro
Political Science

Nancy Santiago Cortes
Political Science and Criminology

Ramon Jacinto
Political Science and Education Sciences

Jenan Husain
Psychology and Education Sciences

Lizeth Tamayo
Social Policy & Public Service and Sociology

Marycruz Hernandez
Sociology, Chicano/Latino Studies and Education Sciences

Maria Lopez
Sociology and Criminology

Hours of Operation

Monday - Friday
8:00 am - 12:00 pm and 1:00 - 5:00 pm
Social & Behavioral Sciences, Suite 1201
Irvine, CA 92697-5100

☎ Phone: (949) 824-6803
☎ Fax: (949) 824-2492
✉ E-mail: socsci@uci.edu

GETTING STARTED

Important Information

What is a UCI NetID?

Your UCI NetID is your key to online services at the University of California, Irvine. Many online services, including Webmail, WebReg, EEE, and numerous others, require you to use your UCI NetID and password in order to log in.

Your UCI NetID is for your individual use only. Do not share your password with anyone.

Activate your UCI NetID:

🌐 <http://activate.uci.edu/activate/menu.html>

- You will need your Student ID number (8 digits), date of birth, and the last 4 digits of your Social Security number.

Gmail (E-mail)

To access your UCI email account, you must first activate your UCI NetID. Note that all official notices and emails will be sent to this email address.

- 🌐 <http://www.google.uci.edu/email.html>
- Login with your UCI NetID and password.

Preferred Name

A preferred name is a name that you choose to be used in place of your legal name on certain university related records and documents. It is how you can be referred to on the campus directory, on class rosters, on your UCI ID card, and on EEE. To set a preferred name, you can use Student Access -> Applications -> Preferred Name and follow the directions to set this.

E-mail Etiquette

Here are some tips on how to use email most effectively to communicate with academic counselors (and other UCI personnel).

1. Use your UCI email address (for UCI correspondence). To protect your privacy, many UCI offices will only respond to messages from UCI e-mail accounts.
2. Identify yourself. When you send an email to an academic counselor, be sure to include your **FULL-NAME**, your **MAJOR**, and your **UCI ID NUMBER**. We need to know who we are talking to in order to give you accurate information.

3. Be considerate. Do not send the same question to more than one person in an office. There's no reason for three or four different people to answer the same question!
4. Check your email regularly. Lots of important information (some of it essential to your success as a student) will be sent by professors, academic counselors, and other UCI personnel. YOU are responsible for reading all official UCI emails sent to your account, and YOU will suffer the consequences if you miss important messages.
5. Be clear and concise. Try to keep email messages brief.
6. Be flexible. Some advising issues really need to be handled in person. Do not be offended if we ask you to make an appointment to discuss your questions—we do this to avoid wasting your time and ours with back-and-forth questions and answers that could be handled more quickly in person.
7. Delete unwanted/old messages. If you do not read your UCI email regularly and clear out old messages and spam, your inbox will fill up and important email messages may be returned and undelivered.
8. Be professional. Treat emails as a formal communication—do not use text messaging abbreviations, slang, four-letter words, etc. if you want to be taken seriously. Watch your grammar, spelling, etc.
9. Be nice. Keep the tone of your email civil. It is very easy for us (and your professors) to forward email and to print it off and put it in your file—it is not anonymous.
DO NOT WRITE YOUR EMAIL MESSAGES IN ALL CAPITAL LETTERS. This is incredibly annoying and is often perceived as being hostile or confrontational.
10. Be patient. Sometimes you may get a response immediately, while at other times it may take a few days since we are often very busy. If you are really in a hurry to get an answer, drop by or call the office.



Schedule of Classes (WebSOC)

- Schedule of Classes is accessible from <http://www.reg.uci.edu>. Available online in Week 6 for the upcoming academic quarter.
- To find:
 - ✓ Major courses: Select appropriate department, then click "Display Web Results"
 - ✓ General Education courses: Select GE category, then click "Display Web Results"

- When selecting courses, pay attention to times, dates, and places. Also write down the 5 digit code which you will need to register through WebReg.

When there are different types of courses listed under the "Type" column, you must enroll in one of each type to maintain your enrollment in the course. Note if there is more than one lecture offered, you must select the corresponding co-class to enroll (See picture below).

Soc Sci 3A COMP RES IN SOC SCI																
Code	Type	Sec	Units	Instructor	Time	Place	Final	Max	Enr	WL	Req	Nor	Rstr	Textbooks	Web	Status
70100	Lec	A	4	HULL, J.	TuTh 3:30- 4:50p	BS3 1200	Tue, Dec 16, 4:00-6:00pm	376	0	n/a	0	0		Bookstore		OPEN
70101	Lab	1	0	STAFF HULL, J.	WF 2:00- 3:20p	SBSG 1241		46	0	n/a	0	0		Bookstore		OPEN
70102	Lab	2	0	STAFF HULL, J.	TuTh 5:00- 6:20p	SBSG 1241										
70103	Lab	3	0	STAFF HULL, J.	TuTh 6:30- 7:50p	SBSG 1241										
70104	Lab	4	0	STAFF HULL, J.	WF 5:00- 6:20p	SBSG 1241										
70105	Lab	5	0	STAFF HULL, J.	WF 11:00-12:20p	SBSG 1241										
70106	Lab	6	0	STAFF HULL, J.	WF 9:30-10:50	SBSG 1241										
70107	Lab	7	0	STAFF HULL, J.	WF 3:30- 4:50p	SBSG 1241										
70108	Lab	8	0	STAFF HULL, J.	WF 12:30- 1:50p	SBSG 1241										
70109	Lab	9	0	STAFF HULL, J.	WF 8:00- 9:20	SBSG 1241		48	0	n/a	0	0		Bookstore		OPEN
70120	Lec	B	4	SHIREY, P.	MWF 2:00- 2:50p	SSLH 100	Fri, Dec 19, 1:30-3:30pm	372	0	n/a	0	0		Bookstore		OPEN
70121	Lab	1	0	STAFF SHIREY, P.	TuTh 11:00-12:20p	SBSG 1241		45	0	n/a	0	0		Bookstore		OPEN
70122	Lab	2	0	STAFF SHIREY, P.	TuTh 3:30- 4:50p	SBSG 1241		45	0	n/a	0	0		Bookstore		OPEN
70123	Lab	3	0	STAFF SHIREY, P.	WF 11:00-12:20p	SBSG 241		33	0	n/a	0	0		Bookstore		OPEN
70124	Lab	4	0	STAFF SHIREY, P.	WF 8:00- 9:20	SBSG 241		45	0	n/a	0	0		Bookstore		OPEN
70125	Lab	5	0	STAFF SHIREY, P.	TuTh 2:00- 3:20p	SBSG 1241		45	0	n/a	0	0		Bookstore		OPEN
70126	Lab	6	0	STAFF SHIREY, P.	MW 6:30- 7:50p	SBSG 1241		45	0	n/a	0	0		Bookstore		OPEN
70127	Lab	7	0	STAFF SHIREY, P.	TuTh 9:30-10:50	SBSG 1241		45	0	n/a	0	0		Bookstore		OPEN
70128	Lab	8	0	STAFF SHIREY, P.	TuTh 12:30- 1:50p	SBSG 1241		45	0	n/a	0	0		Bookstore		OPEN
70129	Lab	9	0	STAFF SHIREY, P.	WF 9:30-10:50	SBSG 241		24	0	n/a	0	0		Bookstore		OPEN

NOTE: Lecture A (code 70100) has the labs listed from A1-A9 (codes 70101-70109). An attempt to enroll in lecture A, but in a lab for Lecture B, code 70129 will result in the message **"CO CLASS MISMATCH"**. You will be dropped from the class once you log out of WebReg, if fail to correct the enrollment error.

NOTE: Lecture A (code 70100) has the labs listed from A1-A9 (codes 70101-70109). An attempt to enroll in lecture A, but in a lab for Lecture B, code 70129 will result in the message "**CO CLASS MISMATCH**". You will be dropped from the class once you log out of WebReg, if fail to correct the enrollment error.

Key Terms

- ✓ Open: Class is open to all students who meet the prerequisites (if any)
- ✓ Waitlist: The maximum class enrollment has been reached but students may waitlist the course so that if any currently enrolled student drops the course, the waitlisted students will be automatically enrolled.
- ✓ Full: Enrollment and waitlist positions are full. Student cannot electronically enroll in the course.
 - Column Definitions, Building Abbreviations, Restriction Codes, and Campus Map are conveniently located at the bottom of each WebSOC results page.

Class Registration (WebReg)

WebReg is accessible from <http://www.reg.uci.edu>. UCInetID and password required. Use WebReg to enroll in classes and make schedule changes during the registration period and the adjustment period. WebReg is available from 6:00 AM to 4:00 AM. daily, with occasional down times for special circumstances such as final grade update.

After logging in with UCInetID and password, you should see this Menu.



Video Tutorial: <http://www.youtube.com/watch?v=IzOLwzxCxG0&feature=youtu.be>

WEBREG
UNIVERSITY REGISTRAR
UNIVERSITY of CALIFORNIA • IRVINE

Search Registrar site: [GO»](#)

[UCI Home](#) : [Schedule of Classes](#) : [WebReg](#) : [StudentAccess](#) : [Site Index](#)

FALL Quarter Menu

[Logout](#)

[Enrollment Menu](#)

Add, drop, or change your course enrollment.

[Wait list Menu](#)

Add or drop courses on the Wait List.

Enrollment Information

[Enrollment Window](#)

Display the date and time you can first enroll through WebReg.

[Fee Status](#)

Display whether your fees have been received.

[Study List](#)

Display your class schedule.

UNIVERSITY REGISTRAR
registrar@uci.edu • ph: (949) 824-6124 • fax: (949) 824-7896
University of California, Irvine • 215 Aldrich Hall • Irvine, CA 92697-4975
© 2007 The Regents of the University of California. All Rights Reserved.

Enrollment Window

(Viewable Monday of Week 7 for upcoming academic quarter)

- Indicates first time you are allowed to enroll in courses.
- When your Enrollment Window opens, you have continuous access to the Enrollment Menu for the next 48 hours.
- After the 48 hours, you may only access WebReg between the hours of 7:00 PM to 7:00 AM.

Fee Status

- Indicates the last day fees are due and whether you have paid them.

Note: if you fail to pay by the deadline, you will be dropped from all of your classes.

Study List

- Displays courses currently enrolled in.



Enrollment Menu



WEBREG
UNIVERSITY REGISTRAR
UNIVERSITY of CALIFORNIA • IRVINE

Search Registrar site: [GO»](#)

UCI Home : Schedule of Classes : **WebReg** : StudentAccess : Site Index

Enrollment Menu

[Logout](#)[Show Study List](#)[Go to Wait List Menu](#)[Return to Main Menu](#)[Send Request](#)[Reset](#)

Request	Course Code	Grade Option	Variable Units	Authorization Code
<input checked="" type="radio"/> Add	<input type="text" value="44215"/>	<input type="checkbox"/> 1=Grade, 2=P/NP	<input type="text"/>	<input type="text"/>
<input type="radio"/> Change	<input type="text"/>			
<input type="radio"/> Drop	<input type="text"/>	Optional: Grade Option, Variable Units, Authorization Code		
<input type="radio"/> List Open Sections	<input type="text"/>			

[Show Study List](#)[Go to Wait List Menu](#)[Return to Main Menu](#)[Send Request](#)[Reset](#)

Request	Course Code	Grade Option	Variable Units	Authorization Code
<input type="radio"/> Add	<input type="text"/>	<input type="checkbox"/> 1=Grade, 2=P/NP	<input type="text"/>	<input type="text"/>
<input type="radio"/> Change	<input type="text"/>			
<input type="radio"/> Drop	<input type="text"/>	Optional: Grade Option, Variable Units, Authorization Code		
<input type="radio"/> List Open Sections	<input type="text"/>			

**NOTE - You must successfully enroll in all co-classes of a course during the same WebReg session or you will be dropped from the entire course upon logout. To remain enrolled in this class, you must also enroll in:
DIS**

You have TENTATIVELY ADDED:

Crse Code	Dept	Crse Num	Sec Typ	Sec Num	Units	Grd Opt	Days	Time	Bldg	Room
69000	SOCIOL	1	LEC	A	4.0	GR	T T	12:30-01:50	SSLH	100

- To enroll: Select "Add", input the 5 digit code from WebSOC, and then click "Send Request."
- To drop: Select "Drop", input the 5 digit code from WebSOC, and then click "Send Request."
- To change grade option/units: Select "Change", input the 5 digit code from WebSOC and change request, and then click "Send Request."
- Once changes have been submitted, the system will indicate if further action is needed or if there are any problems. As the following image demonstrates, enrollment in Sociology 1 is not complete until the student enrolls in the corresponding discussion section.

Waiting List Menu

- When courses have reached the maximum enrollment, students may waitlist the course if the option is indicated on WebSOC. When you waitlist a course, you are not enrolled but rather placed on a list of students who will be automatically enrolled based on their order on the waitlist as enrolled students drop the course.
- Similar to the Enrollment Menu, in order to remain waitlisted for a course you must waitlist each type of class offered.
- You will be informed through your UCI email if you are enrolled in the course. Make sure to check your UCI email regularly.
- If you no longer wish to enroll in the course, please remove yourself from the waitlist to avoid being accidentally enrolled in the course should enough enrolled students drop. It is your responsibility to make sure that your official class schedule accurately reflects the courses you are taking.

Automatic log-off* will result if

Exceeding the maximum time (3 minutes of idle time and 12 minutes of activity) Minimizing the window Hitting the <BACK> button **An automatic log off may result in a delay in disconnecting WebReg from a record resulting in the message "Student record in use, please try again in a few minutes." If this happens, wait about 3-5 minutes then try again*

Student Billing System

Current Account

This is the Current Account view you'll see on ZOT Account Online. It shows the status of your registration fees, previous and current balances, future credits and debits, minimum amount due, as well as details of all transactions.

You will not receive any paper bills. Instead, it is your responsibility to check your bills on-line at <https://zotaccount.uci.edu/>

Billing Statements (ZOT Bills)

Billing statements, called ZOTBills, are produced monthly for accounts that have activity or have balances greater than zero. If your account has a balance due or has had activity, your UCI email account will receive an email message reminding that you can view your most recent monthly bill, your current account information, and pay your bill electronically on ZOT Account Online.

If your account had no activity and the balance due is \$0.00, you will not receive an email, but you can view account information on ZOT Account Online twenty-one hours a day, seven days a week. Your ZOTBill is what you see in the Current Account view on ZOT Account Online.

Contact Campus Billing Services:

📞 (949) UCI-BILL (824-2455)

Registration Fees

This is the Registration Fee view you'll see on ZOT Account Online.

Payment Instructions

The Amount Due on the ZOTBill is the minimum payment amount required. Payments can be made electronically from your ZOT Account Online, or by check or money order drawn on U.S. funds and made payable to the **REGENTS OF THE UNIVERSITY OF CALIFORNIA** or **UC REGENTS**. Payment must be received by the Cashier by the due date to avoid late charges and other potential consequences.

Contact Central Cashier: 📞 (949) 824-6916

PACE Payment Plan (Installment Payments)

The PACE Plan spreads the costs of registration into three monthly payments over the length of the quarter. A student must apply for and activate a new PACE Plan Agreement each quarter. The Plan is activated when the Central Cashier processes the first installment payment (including the non-refundable participation fee), no later than the applicable registration fee deadline. Until then the current PACE application can be cancelled without penalty.

Each student participant must apply quarterly from ZOT Account Online and must agree to abide by the PACE Terms and Conditions in order to join and remain in the program.



Registration and Enrollment

Registration fee payment (either electronically or by check or money order along with a payment stub from your ZOT Account Online) must be received by the Central Cashier by 4:00 PM Pacific time on the fee deadline date. If the full amount of registration fees is covered by financial aid or a combination of aid and waivers, and you have enrolled in the Minimum Required Units (MRU), your fees will be paid automatically. If you have partial fee coverage, submit the amount due to the Central Cashier. Failure to meet the fee payment deadline will cause classes added via WebReg to be dropped and late service charges to be assessed.

Contact Registrar: ☎ (949) 824-6124

For New Students

Holds on New Students' Records

A "hold" is placed on your registration if you are a newly admitted student and the Office of Admissions and Relations with Schools (OARS) has not received the requested documents to verify your conditions of admission stated in your Transfer Conditions (mailed to you with your admissions letter). Requested documents may include official high school transcripts, official transcripts from any college course work, official test scores (SAT I or ACT, SAT II), and official Advanced Placement (AP) and/or International Baccalaureate Higher Level (IB) exam scores. To check the status of sent documents and to see what specific documents OARS still needs, go to Admissions and Relations with Schools and log on to **MyAdmissionsApplication@UCI**. Click on "MyTests" and "MySchools."

A "hold" on your record may prevent you from registering. If you have already enrolled, then the hold may drop you from your courses if you do not resolve the hold. Your admission to UC Irvine is subject to cancellation if OARS does not receive the requested official documents or if any information you submitted on your UC application does not agree with the official documents you submit.

Contact Admissions and Relations with Schools:
☎ (949) 824-6703

For Students with Financial Aid

As soon as you have enrolled in your Minimum Required Units (MRU) and satisfied any conditions noted on your ZOT Account, your aid will be applied to your fees to pay them automatically. The MRU for payment of fees is 6 units for financial aid. It is your responsibility to comply with all terms of the financial aid award before funds can be disbursed. In order to receive financial aid, students are required to pay all University debts, submit all required documents (including on-line entrance counseling materials), and enroll in the MRU.

After registration fees and other University obligations are paid, remaining aid will be electronically deposited or mailed, as you designated with the Office of Financial Aid and Scholarships, beginning the first day of the quarter.

Contact Office of Financial Aid and Scholarships:
☎ (949) 824-8262

Health Insurance

Undergraduate Student Health Insurance

As required by the UC Regents, all undergraduate students are assessed for health insurance as part of their student fees. If you have comparable, verifiable health insurance, you may apply for an exemption (waiver) of this fee using an electronic form available on ZOT Account Online. All waiver applications are handled through ZOT Account Online and instructions are provided. Waivers are due the Friday preceding the fee payment deadline. Additional information on the waiver process is available from the Student Health Center.

Contact Student Health Center Insurance Office:
☎ (949) 824-7093, ☎ (949) 824-4042, or ☎ (949) 824-9415

Student Access

🌐 <http://www.reg.uci.edu/access/student/welcome/>

Through Student Access, students can view and update their information including past and present coursework, address, view grades, etc.

DegreeWorks

This is essentially an online "degree check." You can refer to DegreeWorks on Student Access to see the progress you are making towards your requirements to graduate. It informs you of General Education, University, School, and Major Requirements. DegreeWorks does not always update immediately, so for the most up-to-date information, come into SSUSA for academic advisement.



University Requirements

UC Entry Level Writing

Can be met prior to UCI entrance by:

- Scoring 3 or higher on AP English (Language or Literature) exam.
- Scoring 680 or better on the Writing section of the SAT Reasoning Test.
- Passing UC Analytical Writing exam.
- Scoring 5 or above on the International Baccalaureate English A exam.
- Completion of one quarter or one semester of English composition with a "C" or better.
- Completion of the CSU English Equivalency test with Pass for two full courses of College English credit.

American History & Institutions

Can be met prior to UCI entrance by:

- Completing one year of U.S. history OR one semester of U.S. history and one semester of U.S. government in high school (passed with a grade of "C" or better).
- Scoring 3, 4 or 5 on A.P. U.S. History exam.
- Scoring 550 or better on SAT II American History and Social Studies test.

Unit

Credit for a minimum of 180 quarter units is required to graduate. (Note: Maximum units that can be transferred from other universities, community colleges, other institutions are 105 quarter units).

Grade

A minimum grade point average of at least "C" (2.0) is required overall and in all of the courses required for the major.

Residence

At least 36 of the final 45 units completed by a student for the bachelor's degree must be earned in residence at the UCI campus. Participation in a UC EAP program, travel-study, or attending another UC is considered in residence.



Requirements for the School of Social Sciences

Math

- All math courses must be taken for grades
- All three-courses sequences
 - ✓ Math 2A-B AND Stats 7
 - ✓ Anthropology 10 A-B-C
 - ✓ Psychology 10A-B-C
 - ✓ Social Science 10 A-B-C
 - ✓ Sociology 10 A-B-C
- Business Economics and Economics majors: Math 2A-2B-4 AND Econ 15A-15B-122A
- Quantitative Economics majors: Math 2A-2B-4-3A and Statistics 120A-120B-120C
- May NOT take Social Science 9 A-B-C to fulfill mathematics requirement

Computer

One of the following courses: ICS 31 or Social Science 3A or Psychology 114M



IGETC

Intersegmental General Education Transfer Curriculum (IGETC)

The Intersegmental General Education Transfer Curriculum (IGETC) is a series of courses prospective transfer students may complete at California community colleges to satisfy the lower division general education requirements at both the University of California and the California State University. It was developed to simplify the transfer process for students.

If you choose to follow IGETC, you must complete it before you transfer to UC. If not, you will be required to satisfy the specific lower division general education requirements of the college or school at the UC campus you attend. All IGETC coursework does not have to be completed at the same college. Courses taken at more than one California community college may be used to fulfill IGETC. However, application of courses to IGETC subject areas may vary from college to college. Always consult your community college advisors regarding IGETC.

IGETC is not an admissions requirement therefore not all transfer students have received IGETC. An Associate's Degree is NOT equivalent to IGETC.

Students who have completed UC IGETC must request to have an official, sealed copy of the IGETC certification sent to Social Sciences Undergraduate Student Affairs. Note that at some community colleges, UC IGETC is noted on the transcript while for others, it is a separate form that must be specifically requested (please check with the community college).

If the student has not completed IGETC requirements, the student must refer to the community college to determine if it is possible to complete IGETC after transferring to UCI. If possible and appropriate, the student should complete the remaining requirements and the School of Social Sciences will honor the IGETC. If not possible, the student should

try to be evaluated for partial UC IGETC by the community college. Upon receiving it, the student would then petition to be allowed to use it towards their UCI General Education requirements (Note this is only approved in special circumstances).

IGETC requirements do **NOT** satisfy:

- Upper division writing (Category 1-B)
- School of Social Sciences Requirements
 - ✓ Math requirements
 - ✓ Computer Technology requirements

If IGETC cannot be awarded, it is highly recommended that the student schedule an appointment with an academic counselor to be evaluated for missing UCI General Education requirements as soon as possible.

General Education Requirements

Please refer to the General Catalogue for a complete list of courses.

I. Writing

(2 lower-division plus 1 upper-division courses)

Because of the importance of writing in every academic discipline, in the professions, and in public life, the University is committed to developing the writing abilities of its students at all levels and in all areas. The Writing Requirement expresses this commitment, but the concern for and attention to clear, accurate writing is expected in all courses.

- Need (2) lower division courses and (1) upper division course.
- Must complete lower division writing before 7th quarter at UCI.
- Must pass the UC Analytical Writing exam before enrolling in courses.

Courses for writing must be completed with a minimum grade of "C" or better.

II. Science and Technology

(3 courses)

Understanding the nature of scientific inquiry and the operation of the biological, physical, and technological world is essential for making personal and public policy decisions in a technological society. Students must complete three courses from the approved list in the General Catalogue.

III. Social and Behavioral Sciences

(3 courses)

Courses will focus on principles, sources, and interpretations of human behavior and on how people organize, govern, understand, and explain social life. This category includes the analysis of human behavior at all levels, from the individual to collective social, economic, and political life, and on the scientific methods used in the acquisition of knowledge and the testing of competing theories.

- Satisfied by majoring in the School of Social Sciences

IV. Arts and Humanities (3 courses)

Study of the Arts and Humanities expands the student's sense of diverse forms of cultural expression, past and present. Students develop their critical capacity as they discover how meaning is created and experience variously interpreted. Students must complete three courses from the approved list in the General Catalogue.

V. Quantitative, Symbolic, and Computational Reasoning (3 courses)

This requirement enables students to evaluate quantitative and symbolic arguments and to model and solve real-world problems using systems of abstract models.

- Completed by Social Sciences Math Requirement



VI. Language Other Than English (up to 3 courses)

Study of a language other than English expands students' horizons by encouraging understanding of another culture through its language and heightens one's own language through the investigation of another linguistic system.

Can be met prior to UCI entrance by:

- 3 years of Foreign Language in high school (must have "C" average in the last year).
- AP score of 3, 4 or 5 in a language other than English

SAT II score of 570 or better (500 or better in Modern Hebrew)

At UCI, can be satisfied by:

- UCI Exemption Exam (Contact the UCI Testing Center)
- Satisfaction of the 1C level of a language other than English
- EAP approved course of study

NOTE: Chicano/Latino Studies majors must complete through the Spanish 2A level and International Studies majors must complete the 2B level of one language other than English for a letter grade.

VII. Multicultural Studies (1 course)

This requirement develops students' awareness and appreciation of the history, society, and/or culture of one or more underrepresented groups in California and the United States.

Students must complete one course from the approved list found in the General Catalogue. In fulfilling Category VII, students are encouraged to use courses that are also being used in fulfillment of other GE Categories. For example, Humanities 1C simultaneously satisfies Category VII and a portion of Category IV.

VIII. International/Global Issues (1 course)

Courses in this category focus on significant cultural, economic, geographical, historical, political, and/or sociological aspects of one or more countries other than the United States. Approved courses can be found in the General Catalogue.

In fulfilling Category VIII, students are encouraged to use courses that are also being used in fulfillment of other GE Categories. In addition, Category VIII may be satisfied by one quarter's participation in the Education Abroad Program (EAP).

Overlapping courses between GE Categories:

- Courses applied to Categories II, III, IV, V may not have any overlaps between these Categories.
- Courses applied to Categories VII and VIII may overlap with other categories (including Categories II, III, IV, V)





ANTHROPOLOGY: PEER ADVISORS, For Use with Catalogue Year 2014-15 or earlier

This B.A. Check is for **INFORMATIONAL PURPOSES ONLY**. Please refer to the UCI General Catalogue.

<http://www.anthro.uci.edu/> SBSG 3201, (949) 824-7602

Student Name: _____

ID Number: _____

Peer Advisor:	Date:	Cat. Year:
UC Entry-Level WR:	American History:	American Institutions:
General Education Requirements	Anthropology Requirements & Core	Additional Anthropology Requirements
<p>Please refer to your general catalogue for information regarding the proper courses for General Education Requirements.</p> <p>1) Cat. I: Writing <input type="checkbox"/></p> <p>_____ L.D. _____ L.D. _____ Upper-Division</p> <p>2) Cat. II: Science & Technology <input type="checkbox"/></p> <p>_____ _____ _____</p> <p>3) Cat. III: Social & Beh.Sci. <input type="checkbox"/> Satisfied by the Anthropology Major</p> <p>4) Cat. IV: Arts & Humanities <input type="checkbox"/></p> <p>_____ _____ _____</p> <p>5) Cat. V: Math <input type="checkbox"/> Soc Sci 10A-B-C <u>or</u> Anthro 10A-B-C <u>or</u> Math 2A, 2B & Stats 7 (Must be taken for a letter grade)</p> <p>_____ _____ _____</p> <p>6) Cat. VI: Language other than English <input type="checkbox"/> H.S. (3 years) _____ or 1C _____ AP _____ SATII _____ Exemp Exam _____</p> <p>7) Cat. VII : Multicultural Studies <input type="checkbox"/></p> <p>_____ _____</p> <p>8) Cat. VIII: Int'l/Global Issues <input type="checkbox"/></p> <p>_____ _____</p> <p>9) School of Social Sciences <input type="checkbox"/> Computer technology requirement Social Science 3A or ICS 31 <i>One Course Only</i> _____</p>	<p>10) Two Introductory Courses:</p> <p>_____ Anthro 2A: <i>Sociocultural Anthro</i> AND _____ 1 course chosen from: Anthro 2B: <i>Biological Anthro</i> <u>OR</u> Anthro 2C: <i>Archaeology</i> <u>OR</u> Anthro 2D: <i>Language & Culture</i></p> <p>11) One Additional Lower Division Anthropology Course chosen from:</p> <p>_____ Anthro 30A: <i>Global Issues in Anthropological Perspective</i> OR _____ Anthro 30B: <i>Ethnography & Anthropological Methods</i></p> <p>NOTE: Students are strongly encouraged to take both Anthro 30A AND 30B.</p> <p>12) Three topical courses (12 units) chosen from Anthropology 120-159, 170-179:</p> <p>_____ Anthro 120-159, 170-179 _____ Anthro 120-159, 170-179 _____ Anthro 120-159, 170-179</p> <p>13) Two courses (8 units) in a geographical area, chosen from Anthropology 160-169:</p> <p>_____ & _____</p> <p>14) Four additional elective Anthropology courses (16 units) chosen from Anthropology 30A, 30B, 40-179, 180A (not used above):</p> <p>_____ _____ _____ _____</p> <p>Please note: MUST COMPLETE AT LEAST NINE (9) SEPARATE UPPER-DIVISION COURSES.</p>	<p>15) Three additional Anthropology or School of Social Sciences courses: Please remember that you must complete at least <u>nine (9) separate upper-division</u> courses:</p> <p>_____ _____ _____</p> <p>SSS: Anthro; Chc/Lat Studies; Econ; Int'l Studies; Linguis; LPS; Pol Sci; Psych; Sociol; Soc Sci</p> <p>Students are strongly encouraged to take Anthro 180A after they have had at least 3 courses beyond Anthro 2A and 2B/C/D.</p> <p>Anthropology majors are encouraged to study abroad and experience a different culture while making progress toward degree objectives. The Study Abroad Center, which includes the Education Abroad Program (EAP) and the International Opportunities Program (IOP), assists students in taking advantage of many worldwide opportunities.</p> <p>The Department of Anthropology offers six certificate programs to undergraduate Anthropology majors. http://www.anthropology.uci.edu/an_undergrad_cert</p> <p>Anthro majors may NOT pursue a minor in Medical Anthropology.</p> <p>NOTE: Credit for last 36 of the last 45 units of work immediately preceding graduation must be earned in residence on the UCI campus. <u>**EAP, UCDC, or IOP with International Study Advance Contract are considered in residence.</u></p> <p>PLEASE NOTE: All Anthropology majors must complete a minimum of 15 courses <u>for a letter grade</u> with a minimum average GPA of 2.00 in the major, including at least <u>nine separate Upper-Div courses. Cumulative GPA also must be 2.00 or above.</u></p> <p>16) Units needed to Grad. ➔180.0</p> <p>Minus completed units (Last quarter completed) - _____ Remaining Units = _____</p> <p>Units in progress (IP) ➤ (Current quarter) - _____ Estimated units to complete = _____</p>

Disclaimer: It is your responsibility to retain copies of degree checks if you are not a declared major.



CHICANO/LATINO STUDIES : For Use with Catalogue Year 2014-15 or earlier
 This B.A. Check is for **INFORMATIONAL PURPOSES ONLY**. Please refer to the UCI General Catalogue.
<http://www.chicanolatinostudies.uci.edu/> SST 379/385 (949) 824-7180

Student Name: _____

ID Number: _____

Peer Advisor: _____	Date: _____	Cat. Year: _____
UC Entry-Level WR:	American History:	American Institutions:
General Education Requirements	Chicano/Latino Studies Requirements	Chicano/Latino Studies Requirements
<p>Please refer to your general catalogue for information regarding the proper courses for General Education Requirements.</p> <p>1) Cat. I: Writing <input type="checkbox"/></p> <p>_____ L.D. _____ L.D. _____ CHC/LAT 102W</p> <p>2) Cat. II: Science & Technology <input type="checkbox"/></p> <p>_____ _____ _____</p> <p>3) Cat. III: Social & Beh.Sci. <input type="checkbox"/> Satisfied by the Chc/Lat Studies Major</p> <p>4) Cat. IV: Arts & Humanities <input type="checkbox"/></p> <p>_____ _____ _____</p> <p>5) Cat. V: Math <input type="checkbox"/> Soc Sci 10A-B-C <u>or</u> Math 2A, 2B & Stats 7 (Must be taken for a letter grade)</p> <p>_____ _____ _____</p> <p>6) Cat. VI: Language other than English <input type="checkbox"/> H.S. (3 years) _____ or 1C _____ AP _____ SATII _____ Exemp Exam _____</p> <p>7) Cat. VII : Multicultural Studies <input type="checkbox"/></p> <p>_____</p> <p>8) Cat. VIII: Int'l/Global Issues <input type="checkbox"/></p> <p>_____</p> <p>9) School of Social Sciences <input type="checkbox"/> Computer technology requirement Social Science 3A or ICS 31</p> <p><i>One Course Only</i> _____</p>	<p>10) Two introductory courses chosen from: Anthro 2A/B/C/D; Econ 1; Ling 3; Poli Sci 6A/B/C; Psych 7A; Soc Sci 1A, 5A/B/C/D; Sociol 1/2/3:</p> <p>_____ & _____</p> <p>11) Five core courses as follows:</p> <p>_____ CHC/LAT 61: Into to C/LS I _____ CHC/LAT 62: Into to C/LS II _____ CHC/LAT 63: Into to C/LS III _____ CHC/LAT 101: Research _____ CHC/LAT 102W: Research Sem</p> <p>12) Spanish 2A (or equivalent): (CHC/LAT majors are encouraged to continue through Spanish 2C)</p> <p>_____</p> <p>13) Three courses from the following: (ONE from EACH categories)</p> <p>*LITERATURE, ARTS, AND MEDIA (CHICANO/LATINO 110-129)</p> <p>_____</p> <p>*HISTORY (CHICANO/LATINO 130-139)</p> <p>_____</p> <p>*INEQUALITIES AND SOCIAL CONTEXT (CHICANO/LATINO 140-189)</p> <p>_____</p> <p>14) One course in African American Studies, Asian American Studies or Education 124 (course must focus on the study of African American or Asian American communities in the U.S.):</p> <p>_____</p>	<p>15) Four CHC/LAT STUDIES elective courses (3 of which must be UD):</p> <p>CHC/LAT _____ LD/UD CHC/LAT _____ UD CHC/LAT _____ UD CHC/LAT _____ UD</p> <p>Electives may include C/LS 199. Students may also obtain credit for one of these courses through EAP in Mexico (must consult the Dept for this option.)</p> <p>**Please note: NINE separate courses for the major in Chicano/Latino Studies must be UPPER-DIVISION.</p> <p>NOTE: Credit for last 36 of the last 45 units of work immediately preceding graduation must be earned in residence on the UCI campus. <u>**EAP, UCDC, or IOP with International Study Advance Contract are considered in-residence.</u></p> <p>Students are encouraged to pursue field research and write a substantial research paper on topics of their choice under the guidance of Chicano/Latino faculty members. Often, this project will grow out of issues examined in Chicano/Latino Studies 102 (Research Seminar). Research projects typically involve a combination of library research and fieldwork in the Chicano/Latino community. Methods and analytical frameworks vary depending on the student and faculty advisors. Interested students should enroll in Chicano/Latino Studies 199 (Independent Study).</p> <p>PLEASE NOTE: All Chicano/Latino Studies majors must complete all 16 courses for a letter grade with a minimum major GPA of 2.00. Cumulative GPA must also be 2.00 or above.</p> <p>16) Total Units needed to Grad. ➔180.0</p> <p>Minus completed units - _____ (Last quarter completed) Remaining Units = _____</p> <p>Units in progress (IP) ➤ - _____ (Current quarter) Estimated units to complete = _____</p>

Disclaimer: It is your responsibility to retain copies of degree checks if you are not a declared major.



BUSINESS ECONOMICS: For Use with Catalogue Year 2014-15 or earlier

This B.A. Check is for **INFORMATIONAL PURPOSES ONLY**. Please refer to the UCI General Catalogue.
<http://www.economics.uci.edu/> SSPB 3223/3229, (949) 824-3655

Student Name: _____

ID Number: _____

Peer Advisor: _____	Date: _____	Cat. Year: _____
UC Entry-Level WR :	American History:	American Institutions:
General Education Requirements	Economics Requirements & Core	Additional Economics Requirements
<p>Please refer to your general catalogue for information regarding the proper courses for General Education Requirements.</p> <p>1) Cat. I: Writing <input type="checkbox"/></p> <p>_____ L.D. _____ L.D. _____ Upper-Division</p> <p>2) Cat. II: Science & Technology <input type="checkbox"/></p> <p>_____ _____</p> <p>3) Cat. III: Social & Beh.Sci. <input type="checkbox"/> Satisfied by the Bus Econ Major</p> <p>4) Cat. IV: Arts & Humanities <input type="checkbox"/></p> <p>_____ _____</p> <p>5) Cat. V: Math <input type="checkbox"/> Econ majors must take a combination of Econ Stats and Calculus: Econ 15A-B and Math 2A-B-4.*Refer to requirements #11 and #14 on the right. Statistics 120A-B-C may be used for Econ 15A-B) <i>(Must be taken for a letter grade)</i></p> <p>6) Cat. VI: Language other than English <input type="checkbox"/> H.S. (3 years) _____ or 1C _____ AP _____ SATII _____ Exemp Exam _____</p> <p>7) Cat. VII: Multicultural Studies <input type="checkbox"/></p> <p>_____</p> <p>8) Cat. VIII: Int'l/Global Issues <input type="checkbox"/></p> <p>_____</p> <p>9) School of Social Sciences <input type="checkbox"/> Computer technology requirement Social Science 3A or ICS 31 <i>One Course Only</i> _____</p>	<p>Major in Business Economics: This major is designed for students seeking a business orientation in their study of economics. It does not replicate the traditional business school curriculum; it offers a more tightly focused curriculum that is guided by the rigorous logic and integrative perspective of economics.</p> <p>10) Two intro courses chosen from: Anthro 2A, 2B, 2C, 2D; Soc Sci 1A, 5A, 5B, 5C, 5D; Ling 3; Pol Sci 6A, 6B, 6C; Psych 7A; or Sociol 1, 2, 3: _____ & _____</p> <p>11) Mathematics 2A-2B-4: Math 2A Calculus I _____ Math 2B Calculus II _____ Math 4 Math for Economists _____ (No credit for Math 4 if taken AFTER BOTH Math 2D&2J/3A/6G)</p> <p>12) Basic Economics I, II: Econ 20A _____ & Econ 20B _____ Microeconomics Macroeconomics</p> <p>13) Econ of Accounting Decisions: Econ 25 (pre-req: Econ 20A) _____</p> <p>14) Probability & Statistics in Econ I, II: (pre-req: Math 2A-B; co-req: Math 4) Econ 15A _____ & Econ 15B _____</p> <p>15) Applied Econometrics I, II: (pre-req: Econ 15A-B; Econ 20A-B) Econ 122A _____ & Econ 122B _____</p> <p>16) Intermediate Economics I, II, III Economics 100A-B-C: (pre-req: Econ 20A-B; Math 2A-2B) Econ 100A _____ (pre-req: Econ 20A-B; Math 2A-2B) Econ 100B _____ (pre-req: Econ 100A) Econ 100C _____ (pre-req: Econ 100B)</p>	<p>17) Two Business Electives chosen from: Econ 125, 131A, 132A, 134A, 135, 142A, 142B, 142CW, 145L, 149 (Price Discrimination); 161A, 161B, 161C: Econ _____ (UD) Econ _____ (UD)</p> <p>18) Two Mgmt Electives chosen from: Econ 115, 139 (Managerial Acctg), 140, 147A, 147B, 148, 149 (Bus Strategies), 151A, 151B, 151C, 165, 169 (Econ of Intl Business): Econ _____ (UD) Econ _____ (UD)</p> <p>Additional courses may be added to the above list; up-to-date information will be available at www.economics.uci.edu/</p> <p>19) Three additional Economics courses, lower or upper-division level (may not be Econ 1): Econ _____ Econ _____ Econ _____</p> <p>*Prerequisites for MOST Economics courses may include Econ 15A-B, Econ 100A-B-C or any combination of these five courses. Please refer to the Schedule of Classes for the prerequisites.</p> <p>PLEASE NOTE: All Economics majors must complete a minimum of 22 courses for a letter grade with a minimum GPA of 2.00 in their major, including a minimum of 9 separate Upper-Div courses. Cumulative GPA also must be 2.00 or above.</p> <p>A maximum of THREE 4-unit courses selected from ECON 109-199 may be counted toward the major.</p> <p>NOTE: Credit for last 36 of the last 45 units of work immediately preceding graduation must be earned in residence on the UCI campus. **EAP, UCDC, or IOP (with International Study Advance Contract) are considered in residence.</p> <p>20) Units needed to Grad. ➔180.0</p> <p>Minus completed units (Last quarter completed) - _____ Remaining Units = _____</p> <p>Units in progress (IP) ➤ - _____ (Current quarter) Estimated units to complete = _____</p>

Disclaimer: It is your responsibility to retain copies of degree checks if you are not a declared major.



QUANTITATIVE ECONOMICS: For Use with Catalogue Year 2014-15 or earlier

This B.A. Check is for **INFORMATIONAL PURPOSES ONLY**. Please refer to the UCI General Catalogue.
<http://www.economics.uci.edu/> SSPB 3223/3229, (949) 824-3655

Student Name: _____

ID Number: _____

Peer Advisor: _____	Date: _____	Cat. Year: _____
UC Entry-Level WR:	American History:	American Institutions:
General Education Requirements	Economics Requirements & Core	Additional Economics Requirements
<p>Please refer to your general catalogue for information regarding the proper courses for General Education Requirements.</p> <p>1) Cat. I: Writing <input type="checkbox"/> _____ L.D. _____ L.D. ECON _____ W</p> <p>2) Cat. II: Science & Technology <input type="checkbox"/> _____ _____ _____</p> <p>3) Cat. III: Social & Beh.Sci. <input type="checkbox"/> _____ Satisfied by the Quant Econ Major</p> <p>4) Cat. IV: Arts & Humanities <input type="checkbox"/> _____ _____ _____</p> <p>5) Cat. V: Math <input type="checkbox"/> _____ Satisfied by the Quant Econ Major <i>(Must be taken for a letter grade)</i></p> <p>6) Cat. VI: Language other than English <input type="checkbox"/> _____ H.S. (3 years) _____ or IC _____ AP _____ SATII _____ Exemp Exam _____</p> <p>7) Cat. VII: Multicultural Studies <input type="checkbox"/> _____ _____</p> <p>8) Cat. VIII: Int'l/Global Issues <input type="checkbox"/> _____ _____</p> <p>9) School of Social Sciences <input type="checkbox"/> _____ Computer technology requirement Social Science 3A or ICS 31 <i>One Course Only</i> _____</p>	<p>Major in Quantitative Economics: This major is designed for students seeking the best preparation for careers in business and finance, for law school, for MBA programs, and for graduate studies in social sciences (esp. PhD program in Economics).</p> <p>10) Two intro courses chosen from: Anthro 2A, 2B, 2C, 2D; Soc Sci 1A, 5A, 5B, 5C, 5D; Ling 3; Pol Sci 6A, 6B, 6C; Psych 7A; Sociol 1, 2, 3: _____ & _____</p> <p>11) Mathematics 2A-2B-4-3A/6G (MUST BE TAKEN IN THIS ORDER to ensure getting full credit for all courses): Math 2A Calculus I _____ Math 2B Calculus II _____ Math 4 Math for Economists _____ (No credit for Math 4 if taken after ANY Math 2D AND 2J, 3A, or 6G) Math 3A or 6G Linear Algebra _____</p> <p>12) Basic Economics I, II: Econ 20A _____ & Econ 20B _____ Microeconomics _____ Macroeconomics _____</p> <p>13) Probability & Statistics: Stats 120A _____ (pre-req: Math 2A-B, 4, 3A/6G) Stats 120B _____ (pre-req: Stats 120A) Stats 120C _____ (pre-req: Stats 120B)</p> <p>Math 130A may substitute for Stats 120A ONLY. Students who take Math 130A-B-C may substitute Stats 120A ONLY. Must take Stats 120B and 120C in addition.</p> <p>14) Intermediate Quantitative Microeconomics and Macroeconomics: (pre-req: Econ 20A-B; Math 2A-B, 4, 3A/6G) _____ Econ 105A _____ Econ 105B _____ Econ 105C _____</p> <p>15) Econometrics I, II: (pre-req: Math 2A-B, 4, 3A/6G; Stats 120A-B-C; Econ 105A-B-C) Econ 123A _____ & Econ 123B _____</p>	<p>16) Two Quantitative Econ electives chosen from: Econ 107, 109 ("Evol Game Theory"), 116A, 116B, 123CW, 131A, and 135: Econ _____ Econ _____</p> <p>17) Two additional upper-division Economics courses: Econ _____ Econ _____</p> <p>18) One Economics Upper-Division Writing course: Econ _____ "W" (UD WRITING)</p> <div style="border: 1px solid black; padding: 5px;"> <p>**POSSIBLE additional upper-division ECON course (if overlapping ECON UD WR req't (#18 above) with another UD ECON req't (#16 or #17):</p> <p>Econ _____ (For example, Econ 123CW may satisfy req't #18 AND one course for #16; if so, then you need this req't. Also, if it is passed with at least a "C", it will satisfy the UD writing req't.) (You do not need this req't if you are not overlapping anything.)</p> </div> <p>All Quantitative Economics majors must complete a minimum of 21 courses for a letter grade with a minimum GPA of 2.00 in their major, including a minimum of 13 separate Upper-Div courses. <u>Cumulative GPA also must be 2.00 or above.</u></p> <p>A maximum of THREE 4-unit courses selected from ECON 109-199 may be counted toward the major.</p> <p>NOTE: Credit for last 36 of the last 45 units of work immediately preceding graduation must be earned in residence on the UCI campus. **EAP, UCDC, or IOP with International Study Advance Contract are considered in residence.</p> <p>19) Units needed to Grad. ➔ 180.0</p> <p>Minus completed units - _____ (Last quarter completed) Remaining Units = _____</p> <p>Units in progress (IP) ➤ - _____ (Current quarter) Estimated units to complete = _____</p>

Disclaimer: It is your responsibility to retain copies of degree checks if you are not a declared major.



ECONOMICS: For Use with ALL Catalogue Years 2014-15 or earlier

This B.A. Check is for **INFORMATIONAL PURPOSES ONLY**. Please refer to the UCI General Catalogue.
<http://www.economics.uci.edu/> SSPB 3223/3229, (949) 824-3655

Student Name _____

ID Number: _____

Peer Advisor: _____	Date: _____	Cat. Year: _____
UC Entry-Level WR :	American History :	American Institutions :
General Education Requirements	Economics Requirements & Core	Additional Economics Requirements
<p>Please refer to your general catalogue for information regarding the proper courses for General Education Requirements.</p> <p>1) Cat. I: Writing <input type="checkbox"/> _____ L.D. _____ L.D. _____ Upper-Division</p> <p>2) Cat. II: Science & Technology <input type="checkbox"/> _____ _____ _____</p> <p>3) Cat. III: Social & Beh.Sci. <input type="checkbox"/> Satisfied by the Economics Major</p> <p>4) Cat. IV: Arts & Humanities <input type="checkbox"/> _____ _____ _____</p> <p>5) Cat. V: Math <input type="checkbox"/> Econ majors must take a combination of Econ Stats and Calculus: Econ 15A-B and Math 2A-B-4. *Refer to requirements #11 and #13 on the right. <i>(Must be taken for a letter grade)</i></p> <p>6) Cat. VI: Language other than English <input type="checkbox"/> H.S. (3 years) _____ or 1C _____ AP _____ SATII _____ Exemp Exam _____</p> <p>7) Cat. VII: Multicultural Studies <input type="checkbox"/> _____ _____</p> <p>8) Cat. VIII: Int'l/Global Issues <input type="checkbox"/> _____ _____</p> <p>9) School of Social Sciences <input type="checkbox"/> Computer technology requirement Social Science 3A or ICS 31 One Course Only _____</p>	<p><u>Major in Economics:</u> This major is designed for students seeking a broad education applicable to occupations in business, law, and gov't or as preparation for graduate school in the social sciences. ~~~~~</p> <p>10) Two intro courses chosen from: Anthro 2A, 2B, 2C, 2D; Soc Sci 1A, 5A, 5B, 5C, 5D; Ling 3; Pol Sci 6A, 6B, 6C; Psych 7A; Sociol 1, 2, 3: _____ & _____ ~~~~~</p> <p>11) Mathematics 2A-2B-4: Math 2A Calculus I _____ Math 2B Calculus II _____ Math 4 Math for Economists _____ (No credit for Math 4 if taken after both Math 2D & 2J/3A/6G) ~~~~~</p> <p>12) Basic Economics I, II: Econ 20A Microeconomics _____ Econ 20B Macroeconomics _____ (pre-req: Econ 20A) ~~~~~</p> <p>13) Probability & Statistics in Econ I, II: Economics 15A-B: Econ 15A _____ (pre-req: Math 2A-B, 4) Econ 15B _____ (pre-req: Econ 15B) ~~~~~</p> <p>14) Applied Econometrics I: (pre-req: Econ 15A-B; Econ 20A-B) Econ 122A _____ ~~~~~</p> <p>15) Intermediate Economics I, II, III Economics 100A-B-C: (pre-req: Econ 20A-B; Math 2A-2B) Econ 100A _____ (pre-req: Econ 20A-B; Math 2A-2B) Econ 100B _____ (pre-req: Econ 100A) Econ 100C _____ (pre-req: Econ 100B) ~~~~~ *ECON 100A-B-C and Econ 105A-B-C may NOT be both taken for credit</p>	<p>16) Six additional 4-unit ECONOMICS courses, one of which may be lower-div (NOT Econ 1): Econ _____ (UD) Econ _____ (UD) Econ _____ (UD) Econ _____ (UD) Econ _____ (UD) Econ _____ (UD/LD)</p> <p>*Prerequisites for MOST Economics courses may include Econ 15A-B, 122A, Econ 100A-B-C or any combination of these courses. Students are encouraged to review the UCI General Catalogue/Schedule of Classes for the proper prerequisites. ~~~~~</p> <p><u>PLEASE NOTE:</u> All Economics majors must complete a minimum of 19 courses for a letter grade with a minimum GPA of 2.00 in their major, including a <u>minimum of 10 separate Upper-Div courses. Cumulative GPA also must be 2.00 or above.</u> ~~~~~</p> <p>A maximum of THREE 4-unit courses selected from ECON 109-199 may be counted toward the major. ~~~~~</p> <p>NOTE: Credit for last 36 of the last 45 units of work immediately preceding graduation must be earned in residence on the UCI campus. <u>**EAP, UCDC, or IOP with International Study Advance Contract are considered in residence.</u> ~~~~~</p> <p>17) Units needed to Grad. ➔180.0</p> <p>Minus completed units - _____ (Last quarter completed) Remaining Units = _____</p> <p>Units in progress (IP) ➤ - _____ (Current quarter) Estimated units to complete = _____</p>

Disclaimer: It is your responsibility to retain copies of degree checks if you are not a declared major.



INTERNATIONAL STUDIES: For Use with Catalogue Year 2014-15 or later

(students with cat year between 2009-12 may request to follow this by contacting the SS Student Affairs Office)

This B.A. Check is for **INFORMATIONAL PURPOSES ONLY**. Please refer to the UCI General Catalogue.

<http://internationalstudies.ss.uci.edu/> (949) 824-8687, SST 571

Student Name: _____

ID Number: _____

Peer Advisor: _____	Date: _____	Cat. Year: _____
UC Entry-Level WR:	American History:	American Institutions:
General Education Requirements	International Studies Requirements	International Studies Requirements
<p>Please refer to your general catalogue for information regarding the proper courses for General Education Requirements.</p> <p>1) Cat. I: Writing <input type="checkbox"/> _____ L.D. _____ L.D. _____ Upper-Division</p> <p>2) Cat. II: Science & Technology <input type="checkbox"/> _____ _____ _____</p> <p>3) Cat. III: Social & Beh.Sci. <input type="checkbox"/> Satisfied by the Int'l Studies Major</p> <p>4) Cat. IV: Arts & Humanities <input type="checkbox"/> _____ _____ _____</p> <p>5) Cat. V: Math <input type="checkbox"/> Soc.Sci.10A-B-C <u>or</u> Math 2A, 2B <u>&</u> Stats 7 <u>(Must be taken for a letter grade)</u> _____ _____ _____</p> <p>6) Cat. VI: Language other than English <input type="checkbox"/> IS majors must take a foreign language through the 2B level or equivalent (refer to requirement #13 on right)</p> <p>7) Cat. VII: Multicultural Studies <input type="checkbox"/> _____ _____</p> <p>8) Cat. VIII: Int'l/Global Issues <input type="checkbox"/> _____ _____</p> <p>9) School of Social Sciences <input type="checkbox"/> Computer technology requirement Social Science 3A or ICS 31 _____ One Course Only _____</p>	<p>10) Four Core courses: _____ IS 11 <i>Global Cultures & Society</i> _____ IS 13 <i>Global Economy</i> _____ IS 14 <i>Intro to International Relations</i> _____ History 21A, 21B, or 21C <i>World History</i></p> <p>11) Macroeconomics: _____ Econ 20B <i>Macroeconomics</i> (pre-req: IS 13 or Econ 20A)</p> <p>12) One Intro Course, chosen from: Anthro 2A (<i>Cultural Anthro</i>); Pol Sci 51A (<i>Comparative Politics</i>); Religious Studies 5A (<i>World Religions I</i>), 5B (<i>World Religions II</i>); Sociol 2 (<i>Int'l Sociology</i>); or Soc Sci 5D (<i>US & World Geography</i>): _____ _____</p> <p>13) Int'l Language Requirement: Competency in lang other than English— competency may be established by: • 2B level taken at UCI • college level course equivalent to UCI's 2B _____ _____</p> <p>14) International Studies Forum: _____ Int St 183A _____ Intl St 183A (JUNIOR or SENIOR year) _____</p> <p>15) Regional Focus: Four upper-division courses#, at least TWO that focus on ONE geographic area; courses must be from at least 2 different disciplines and include materials on at least 2 different countries. • Europe and Eurasia • Africa and the Middle East • The Americas (including USA) • Asia • Diasporic, Religious and/or Linguistic areas (e.g., Francophone World, Islamic World, Jewish Diaspora, African Diaspora) ①. _____ ②. _____ 3. _____ 4. _____</p> <p># Though some courses are listed in more than one focus, course may NOT count for both the regional & functional areas. (no double counting of any courses within the major requirements)</p>	<p>16) Functional Focus: Four upper-division courses# from the following with at least 3 in ONE area: Choose ONE area:</p> <ul style="list-style-type: none"> • Global Issues & Institutions (Int'l/Transnat'l Org & Movements; Int'l/Comp Law; Gbl Trade, Investment & Finance; Gbl Developmnt, Pub Health, & Environ) • Global Conflict & Negotiation (Gbl Conflict & Conflict Resolution; Gbl Security) • Global Role of US & California • Global Society & Culture (Gbl Population, Migration, & Diaspora; Gbl Identities: Religion, Nationalism, Gender; Gbl Ethics & Human Rights) <p>①. _____ ②. _____ ③. _____ 4. _____</p> <p>Visit the Undergraduate Student Affairs Office (SBSG 1201) or the International Studies Major Office (SST 571) for list of approved upper-division courses.</p> <p>17) International Experience: http://internationalstudies.ss.uci.edu/is_intlexp</p> <p>May be satisfied by:</p> <ul style="list-style-type: none"> • Education Abroad Program (EAP)** • Int'l Opportunities Program (IOP)** • Approved local internship (w/ int'l focus)/ IS 197 • UCDC Internship Program (w/ int'l focus) • Washington DC Ctr Program (w/ int'l focus) • SS 196: Global Connect <p>** For more info on EAP and IOP and financing questions, visit the UCI Study Abroad Center at Student Service II 1100.</p> <p>Residency Req: Credit for 36 of the last 45 units of work immediately preceding graduation must be earned in residence on the UCI campus. **EAP, UCDC, or IOP (with international study Advance Contract) are considered in residence.</p> <p>NOTE: All Int'l Studies majors must complete a min of 16-17 courses for a letter grade with a min major GPA of 2.00. Cumulative GPA must also be 2.00 or above.</p> <p>18) Total Units needed to Grad. ➔180.0</p> <p>Minus completed units - _____ (Last quarter completed) Remaining Units = _____ Units in progress (IP) ➤ - _____ (Current quarter) Estimated units to complete = _____</p> <p>https://www.facebook.com/uciinternationalstudies?ref=nf</p>

Disclaimer: It is your responsibility to retain copies of degree checks if you are not a declared major.



POLITICAL SCIENCE: PEER ADVISORS, For Use with Catalogue Year starting 2014-15
This B.A. Check is for **INFORMATIONAL PURPOSES ONLY**. Please refer to the UCI General Catalogue.
<http://www.polisci.uci.edu/> SSPB 5229, (949) 824-5361

Student Name: _____

ID Number: _____

Peer Advisor:	Date:	Cat. Year:
UC Entry-Level WR:	American History:	American Institutions:
General Education Requirements	Political Sci. Course Req's. & Module	Additional Political Science & Units
<p>Please refer to your general catalogue for information regarding the proper courses for General Education Requirements.</p> <p>1) Cat. I: Writing <input type="checkbox"/></p> <p>_____ L.D.</p> <p>_____ L.D.</p> <p>_____ Upper-Division</p> <p>2) Cat. II: Science & Technology <input type="checkbox"/></p> <p>_____</p> <p>_____</p> <p>_____</p> <p>3) Cat. III: Social & Beh.Sci. <input type="checkbox"/></p> <p>Satisfied by the Poli Sci Major</p> <p>4) Cat. IV: Arts & Humanities <input type="checkbox"/></p> <p>_____</p> <p>_____</p> <p>_____</p> <p>5) Cat. V: Math <input type="checkbox"/></p> <p>Soc Sci 10A-B-C <u>or</u></p> <p>Math 2A, 2B & Stats 7</p> <p><u>(Must be taken for a letter grade)</u></p> <p>_____</p> <p>_____</p> <p>_____</p> <p>6) Cat. VI: Language other than English <input type="checkbox"/></p> <p>H.S. (3 years) _____ or 1C _____</p> <p>AP _____ SATII _____ Exemp Exam _____</p> <p>7) Cat. VII : Multicultural Studies <input type="checkbox"/></p> <p>_____</p> <p>8) Cat. VIII: Int'l/Global Issues <input type="checkbox"/></p> <p>_____</p> <p>9) School of Social Sciences <input type="checkbox"/></p> <p>Computer technology requirement</p> <p>Social Science 3A or ICS 31</p> <p><u>One Course Only</u> _____</p>	<p>10) FIVE (5) LOWER-DIVISION courses:</p> <p>FOUR (4) courses must be chosen from the following (one must be the intro course for the UD module requirement below (#11)):</p> <p><u>Choose 4 course from:</u></p> <p>Pol Sci 6A: Intro to Pol Sci--Political Analysis</p> <p>Pol Sci 6B: Intro to Pol Sci--Macropolitics</p> <p>Pol Sci 6C: Intro to Pol Sci--Micropolitics</p> <p>Pol Sci 21A: Intro to American Government</p> <p>Pol Sci 31A: Intro to Political Theory</p> <p>Pol Sci 41A: Intro to International Relations</p> <p>Pol Sci 51A: Intro to Politics Around the World</p> <p>Pol Sci 61A: Intro to Race & Ethnicity in Pol Sci</p> <p>Pol Sci 71A: Intro to Law</p> <p>_____</p> <p>_____</p> <p>ONE (1) additional lower-division POL SCI course not used above:</p> <p>_____</p> <p>11) THREE (3) Upper-Division courses in a Political Science MODULE: A module is comprised of three courses from a specific sub-field of Political Science. Intro course for each module indicated in parenthesis ().</p> <p>120-129 (21A) = American Politics & Gov't</p> <p>130-139 (31A) = Political Theory & Methods</p> <p>140-149 (41A) = International Relations</p> <p>150-159 (51A) = Comparative Politics</p> <p>170-179 (71A) = Public Law</p> <p>Module: _____</p> <p>Intro course (taken above in #10): _____</p> <p>POL SCI _____</p> <p>POL SCI _____</p> <p>POL SCI _____</p> <p>Above courses do not have to be sequential either numerically or alphabetically.</p> <p>12) FOUR (4) additional Upper-Division Political Science courses of your choice:</p> <p>POL SCI _____</p> <p>POL SCI _____</p> <p>POL SCI _____</p> <p>POL SCI _____</p>	<p>13) TWO (2) additional upper-division (UD) courses in the School of Social Sciences (may include Political Science) AND ONE (1) course, any level, from any discipline within the School of Social Sciences (SSS):</p> <p>_____ UD SSS</p> <p>_____ UD SSS</p> <p>_____ LD/UD SSS</p> <p>School of Social Sciences: Anthro; Chc/Lat Studies; Econ; Int'l Studies; Linguist; LPS; Pol Sci; Psych; Sociol; Soc Sci</p> <p>NOTE: A maximum of TWO 4-unit courses numbered Pol Sci 198-199 may be counted toward the major.</p> <p>Political Science students are encouraged to look into various programs/opportunities offered such as undergrad research, UCDC (Washington DC internship), Sacramento Internship Program, Mock Trial, Law Forum, Model UN, and Pre-Law Society.</p> <p>NOTE: Credit for last 36 of the last 45 units of work immediately preceding graduation must be earned in residence on the UCI campus. **EAP, UCDC, or IOP with International Study Advance Contract are considered in residence.</p> <p>PLEASE NOTE: All Political Science majors must complete a min. of 15 courses for a letter grade with a min. GPA of 2.00 in their major, including a <u>minimum of 10 Upper-Division courses. Cumulative GPA also must be 2.00 or above.</u></p> <p>14) Total Units needed to Grad. ➔ 180.0</p> <p>Minus completed units - _____ (Last quarter completed)</p> <p>Remaining Units = _____</p> <p>Units in progress (IP) ➤ - _____ (Current quarter)</p> <p>Estimated units to complete = _____</p>

Disclaimer: It is your responsibility to retain copies of degree checks if you are not a declared major.



PSYCHOLOGY: PEER ADVISORS, For Use with Catalogue Year 2014-15 or earlier

This B.A. Check is for **INFORMATIONAL PURPOSES ONLY**. Please refer to the UCI General Catalogue.

<http://www.cogsci.uci.edu/> SBSG 2201, (949) 824-3771

Student Name _____

ID#: _____

Peer Advisor	Date:	Cat year:
UC Entry-Level WR:	American History :	American Institutions :
General Education Requirements	Psychology Major Requirements	Additional Psychology & Units
<p>Please refer to your general catalogue for information regarding the proper courses for General Education Requirements.</p> <p>1) Cat. I: Writing <input type="checkbox"/></p> <p>_____ LD _____ LD _____ Upper-Division</p> <p>2) Cat. II: Science & Technology <input type="checkbox"/></p> <p>(Bio 1A and Bio 35 plus another cat 2 course are recommended for Psych majors.)</p> <p>_____ _____ _____</p> <p>3) Cat. III: Social & Beh.Sci. <input type="checkbox"/></p> <p>Satisfied by the Psych Major</p> <p>4) Cat. IV: Arts & Humanities <input type="checkbox"/></p> <p>_____ _____ _____</p> <p>5) Cat. V: Math <input type="checkbox"/></p> <p>Psych/Soc.Sci.10A-B-C <u>or</u> Math 2A-B & Stats 7 (Must be taken for a letter grade) Most psychology graduate programs require statistics (which may be satisfied by taking Stats10A-B-C), but some require calculus (which, at UCI, may be satisfied by taking Mathematics 2A-B).</p> <p>_____ _____ _____</p> <p>6) Cat. VI: Language other than English <input type="checkbox"/></p> <p>H.S. (3 years) _____ or 1C _____ AP _____ SATII _____ ExempExam _____</p> <p>7) Cat. VII : Multicultrl Studies <input type="checkbox"/></p> <p>_____ _____</p> <p>8) Cat. VIII: Int'l/Global Issues <input type="checkbox"/></p> <p>_____ _____</p> <p>9) School of Social Science <input type="checkbox"/></p> <p>Computer technology requirement ICS 31; Psych 114M; or Social Science 3A One Course Only _____</p>	<p>10) PSYCHOLOGY FUNDAMENTALS:</p> <p>9A _____ 9B _____ 9C _____</p> <p>11) Two introductory courses chosen from: Anthro 2A, 2B, 2D; Econ 1; Ling 3; Pol Sci 6C; Soc 1, 2, 3; SS5A; or 1-2 from SS H1E/F/G: _____ & _____</p> <p>12) PSYCHOLOGY CORE: four (4) core courses, designated with the ending number "0", chosen from:</p> <p>_____ 120A = Abnormal Psychology _____ 120D = Development Psychology _____ 120H = History of Psychology _____ 120P = Personality Theories _____ 130A = Perception & Sens Processes _____ 140C = Cognitive Science _____ 140L = Learning Theory _____ 140M = Human Memory _____ 150 = Psych of Language _____ 160A = Cognitive Neuroscience _____ 160D = Brain Disorders & Behavior</p> <p>13) PSYCHOLOGY MODULE: 3 Upper-Div courses must be taken from one of the following MODULES: 110-119 (Research Methods); 120-129 (General); 130-139 (Percept & Sensory); 140-159 (Learning Cognition/Semiotics & Lang); 160-169 (Cognitive Neurosci); 170-179 (Interdisciplinary Studies)</p> <p>These courses may overlap with the CORE courses or EXPERIMENTAL course. However, additional UD courses will be required to make up for them (refer to (c) on right).</p> <p>Psych _____ U.D.# Psych _____ U.D.# Psych _____ U.D.#</p> <p>14) EXPERIMENTAL PSYCHOLOGY: Choose ONE course and lab from below*:</p> <p>Experimental Psych 112A & LA _____ Prereq: Psych 9ABC and Stats 10ABC or Math 2AB and 7 **112A is the first course of a 3-course series. Take this course ONLY if you will complete the whole series. (112A-B-C sequence is recommended for students who intend to pursue graduate studies in Psychology.)</p> <p>Psych Research Methods 112M & LM _____ Prereq: Psych 9ABC and Stats 10ABC or Math 2AB and 7</p> <p>Cognitive Robotics 112R & LR _____ Prereq: Psych 9ABC and Stats 10ABC or Math 2AB and 7</p>	<p>15) 4-7 Additional Psychology courses:</p> <p>a) ONE may be lower-div: Psych _____ L.D./U.D.# (<i>may NOT be Psych 7A, 46A</i>)</p> <p>b) 3 additional UD elective Psych course: Psych _____ U.D.# Psych _____ U.D.# Psych _____ U.D.#</p> <p>If there are any overlapping classes between Core, Module, or Experimental, the following must be done:</p> <p>c) 1-3 possible additional UD elective Psych: *Psych _____ U.D.# *Psych _____ U.D.# *Psych _____ U.D.#</p> <p># Certain courses offered in the Schools of Biological Sciences and Social Ecology may be used to satisfy the UD Psych course requirement #15. A total of 3 of these courses may be used, with a maximum of 2 from one School. The courses that may be used are <u>Psych 127's, 147's, and 177's, PSB P193E (same as C105), and Bio Sci D137, E174, N110, N159.</u></p> <p>NOTE: All Psych majors must complete a min. of 17 courses (with a min. of 11 <u>separate Upper-div Psych courses</u>) for a <u>letter grade</u> with a min. GPA of 2.00 in their major. <u>Cumulative GPA also must be 2.00 or above.</u></p> <p>Residency Req: Credit for 36 of the last 45 units of work immediately preceding graduation must be earned in residence on the UCI campus. **EAP, UCDC, or IOP (with International Study Advance Contract) are considered in residence.</p> <p>16) Total Units needed to Grad. ➔ 180.0</p> <p>Minus completed units - _____ (Last quarter completed)</p> <p>Remaining Units = _____</p> <p>Units in progress (IP) ➤ - _____ (Current quarter)</p> <p>Estimated units to complete = _____</p> <p>NOTES _____ _____ _____ _____</p>

Disclaimer: It is your responsibility to retain copies of degree checks if you are not a declared major



SOCIAL POLICY & PUBLIC SERVICE: For Use with Catalogue Year 2011-12 or later

This B.A. Check is for **INFORMATIONAL PURPOSES ONLY**. Please refer to the UCI General Catalogue.

http://spps.ss.uci.edu/spps_major

Student Name: _____

ID Number: _____

Peer Advisor: _____	Date: _____	Cat. Year: _____
UC Entry-Level WR :	American History:	American Institutions:
General Education Requirements	Social Science Core Requirements	Social Science Focus Requirements
<p>Please refer to your general catalogue for information regarding the proper courses for General Education Requirements.</p> <p>1) Cat. I: Writing <input type="checkbox"/></p> <p>_____ LD</p> <p>_____ LD</p> <p>_____ Upper-Division</p> <p>2) Cat. II: Science & Technology <input type="checkbox"/></p> <p>_____</p> <p>_____</p> <p>3) Cat. III: Social & Beh.Sci. <input type="checkbox"/></p> <p>Satisfied by the SPPS Major</p> <p>4) Cat. IV: Arts & Humanities <input type="checkbox"/></p> <p>_____</p> <p>_____</p> <p>5) Cat. V: Math <input type="checkbox"/></p> <p>SocSci10A-B-C <u>or</u></p> <p>Math 2A-2B (Calc I-II) & Stats 7</p> <p>(Must be taken for a letter grade)</p> <p>_____</p> <p>6) Cat. VI: Language other than English <input type="checkbox"/></p> <p>H.S. (3 years) _____ or 1C _____</p> <p>AP _____ SATII _____ ExempExam _____</p> <p>7) Cat. VII: Multicultural Studies <input type="checkbox"/></p> <p>_____</p> <p>8) Cat. VIII: Int'l/Global Issues <input type="checkbox"/></p> <p>_____</p> <p>9) School of Social Sciences <input type="checkbox"/></p> <p>Computer technology requirement</p> <p>Social Science 3A or ICS 31</p> <p>One Course Only _____</p>	<p>10) Understanding Fundamental Concepts, Analytical Tools, and Methods in Social Science:</p> <p>Social Science 1A _____</p> <p>(Principles in Social Science)</p> <p>Social Science 2A _____</p> <p>(Social Science Analysis)</p> <p>Social Science 3A _____</p> <p>(Computer-Based Research in Social Sciences)</p> <p>(Soc Sci 3A also satisfies the School of Social Science Computer Technology requirement)</p> <p>11) Intro to Soc Policy & Pub Service:</p> <p>Social Science 40 _____</p> <p>12) Cultural Competency:</p> <p>one course chosen from:</p> <p>Social Science 70C (Comparing Cultures)</p> <p>OR Sociology 63 (Race & Ethnicity)</p> <p>SS 70C OR Soc 63 _____</p> <p>13) Leadership:</p> <p>Social Sciences 181A _____</p> <p>(Ethical Leadership)</p> <p>14) Two courses in Research Methods:</p> <p>Social Science 102A _____</p> <p>(Intro to Geographical Information Systems)</p> <p>AND</p> <p>Social Science 170A _____</p> <p>(Research Methods in the Social Sciences)</p> <p>15) Three quarters of Field Studies in Public & Community Service:</p> <p>Social Science 193A-B-C</p> <p>MUST be taken <u>consecutively</u></p> <p><u>Fall-Winter-Spring</u> (NO EXCEPTION):</p> <p>(pre-req: SS70C or Sociol 63 and completion of LD Writing)</p> <p>(Completion of UD Writing is highly recommended)</p> <p>_____</p> <p>193A (Fall) 193B (Winter) 193C (Spring)</p> <p>16) Off-campus Internship Experience:</p> <p>Social Science 194A _____</p> <p>(Public Service Internship)</p> <p>A list of internships is provided by the</p> <p>Social Sciences Academic Resource Center (SSARC) , (949)824-8322 or</p> <p>have it pre-approved by SSARC.</p> <p>http://www.socsci.uci.edu/ssarc/</p> <p>http://spps.ss.uci.edu/spps_faqs</p>	<p>17) Functional Focus</p> <p>Three courses from one of the three area:</p> <p>Choose 1 focus and take 3 classes:</p> <ul style="list-style-type: none"> ➤ Education ➤ Health ➤ Governance <p>Education courses: Educ 124, 126, 132, 150, 157, 175, 180, 182; Chc/Lat 189 (when focus is Education); Econ 158, Psych 141J, 141K, 141L, SS 196 (2 quarters=1 course)</p> <p>Health courses: Anthro 128B, 132A, 134A, 134G; Chic/Lat 168, 178, 179 (when focus is Health); Psych 120A, 120D, 121S, 127C, 127E, 127G, 127H, 127I, 127T, 171, 174A, 174E, 174F; Sociol 135, 154</p> <p>Governance courses: Anthro 121G, 121J; Int'l Stu 161A, 162, 165, 177C, 177E; Pol Sci 122A, 122B, 123A, 124A, 124B, 124C, 124E, 125A, 125B, 126C, 126D, 130A, 130B, 137B, 137C, 142D, 142E, 142F, 151H, 171A, 171B, 171C, 171D, 171F, 172A, 172B, 174A, 174B, 174C, 179; Soc Sci 152A, 1731, 188A, 194B; Sociol 138, 141, 144, 177</p> <div style="border: 1px solid black; padding: 5px; margin-top: 10px;"> <p>Focus: _____</p> <p>Courses: _____</p> </div> <p>NOTE: Certain special topics courses may be applicable to this major; students should see their undergraduate advisor prior to enrolling in a special topics course to ensure that it meets the requirements.</p> <p>Social Science 184A-B (Sage Leadership Research) and 192 (Washington Seminar) may not be used to satisfy School requirements.</p> <p>PLEASE NOTE: All Soc Soci majors must complete a minimum of 15 courses for a letter grade with a minimum GPA of 2.00 in their major, including a <u>minimum of 10 separate Upper-Div courses</u>. Cumulative GPA also must be 2.00 or above.</p> <p>NOTE: Credit for 36 of the last 45 units of work immediately preceding graduation must be earned in residence on the UCI campus. **EAP, UCDC, or IOP (with International Study Advance Contract) are considered in residence.</p> <p>18) Units needed to Grad. →180.0</p> <p>Minus completed units - _____</p> <p>Remaining Units = _____</p> <p>Units in progress (IP) ➤ - _____</p> <p>Estimated units to complete = _____</p>

Disclaimer: It is your responsibility to retain copies of degree checks if you are not a declared major.



SOCIOLOGY: PEER ADVISORS, For Use with Catalogue Year 2014-15 or earlier

This B.A. Check is for INFORMATIONAL PURPOSES ONLY. Please refer to the UCI General Catalogue.

<http://www.sociology.uci.edu/> SSPB 4211-4221, (949) 824-6800/7637

Student Name: _____

ID Number: _____

Peer Advisor:	Date:	Cat. Year:
UC Entry-Level WR:	American History:	American Institutions:
General Education Requirements	Sociology Requirements & Module	Additional requirements
<p>Please refer to your general catalogue for information regarding the proper courses for General Education Requirements.</p> <p>1) Cat. I: Writing <input type="checkbox"/></p> <p>_____ LD _____ LD _____ Upper-Division</p> <p>2) Cat. II: Science & Technology <input type="checkbox"/></p> <p>_____ _____ _____</p> <p>3) Cat. III: Social & Beh.Sci. <input type="checkbox"/> Satisfied by the Sociology Major</p> <p>4) Cat. IV: Arts & Humanities <input type="checkbox"/></p> <p>_____ _____ _____</p> <p>5) Cat. V: Math <input type="checkbox"/> SocSci 10A-B-C (or Sociol 10A-B-C) <u>or</u> Math 2A-2B (Calc I-II) & Stats 7 <u>(Must be taken for a letter grade)</u></p> <p>_____ _____ _____</p> <p>6) Cat. VI: Language other than English <input type="checkbox"/> H.S. (3 years) _____ or 1C _____ AP _____ SATII _____ ExempExam _____</p> <p>7) Cat. VII: Multicultural Studies <input type="checkbox"/></p> <p>_____ _____</p> <p>8) Cat. VIII: Int'l/Global Issues <input type="checkbox"/></p> <p>_____ _____</p> <p>9) School of Social Sciences <input type="checkbox"/> Computer technology requirement Social Science 3A or ICS 31</p> <p><i>One Course Only</i> _____</p>	<p>10) Sociology Introductory courses: Sociology 1 <u>AND</u> either Sociology 2 or 3</p> <p>Sociol 1 _____ & _____ Sociol 2 <u>OR</u> 3 _____</p> <p>11) Additional Introductory course (non-Sociology) chosen from: Anthro 2A/B/C/D; Economics 1; Ling. 3; Poli Sci 6A/B/C; Psychology 7A; LPS 4A/B Soc Sci 1A or 5A/B/C/D (Geography)</p> <p>_____</p> <p>12) Sociology Methods & Theory:</p> <p>Sociol 110: Rsch. Methods _____ AND Sociol 120: Soc. Theory _____</p> <p>_____</p> <p>13) Research Design & Implementation:</p> <p>Sociol 180A: Soc. Majors Seminar _____ (pre-req: Sociol 110)</p> <p>_____</p> <p>14) Five (5) Sociology Core courses: NO MORE than two (2) may be lower-division, selected from the following:</p> <p><u>Lower-division (no more than 2):</u></p> <p>Sociol 31 (Self-Identity & Society), 41 (Small Grp Dynamics), 43 (City & Community), 44 (Births, Deaths, & Migration), 56 (Society & Religion), 62 (Families & Intimate Reltns), 63 (Race & Ethnicity), 68A (Ethnic & Immigr America)</p> <p><u>Upper-division (at least 3):</u></p> <p>Sociol 133 (Sociol of Generosity), 135 (Social Psych Networks), 138 (Business Decisions), 141 (Organizations), 144 (Politics, Power, & Society), 145 (Occupations & Professions), 150 (Sociol of Religion), 158C (Money, Work, & Social Life), 161 (Sociol of Sex & Gender), 164 (Aging & Society), 166 (Immigr & Ineq), 167A (Racial/Ethnic Reltns in US), 171 (Environ & Society), 173 (Social Inequality), 174 (Protests, Mvmts, & Revolutns), 175B (China in the Gbl Age)</p> <p>_____ (LD/UD) _____ (LD/UD)</p> <p>_____ (UD) _____ (UD)</p> <p>_____ (UD)</p>	<p>15) Two (2) additional Sociology courses, one of which MUST be upper-division:</p> <p>_____ (UD Sociology)</p> <p>_____ (LD/UD Sociology)</p> <p>_____</p> <p>16) Two (2) additional Upper-Division School of Social Sciences courses (may include Sociology):</p> <p>_____ (UD SSS)</p> <p>_____ (UD SSS)</p> <p>SSS (School of Social Sciences): Anthro; Chc/Lat Studies; Econ; Int'l Studies; Linguis; LPS; Pol Sci; Psych; Sociol; Soc Sci</p> <p>UD (upper-division): courses numbered 100-199 LD (lower-division): courses numbered 1-99</p> <p>The Sociology Department offers 4 departmental certificates in <u>Business, Economy, & Organizations, Diversity & Inequality, Global & International Sociology, and Social Problems & Public Policy</u>. Sociology majors are encouraged to participate in the certificate program. For more info, visit: http://www.sociology.uci.edu/soc_undergrad_cert</p> <p>NOTE: Credit for last 36 of the last 45 units of work immediately preceding graduation must be earned in residence on the UCI campus. <u>**EAP, UCDC, or IOP with International Study Advance Contract are considered in residence.</u></p> <p>PLEASE NOTE: All Sociology majors must complete a min. of 15 courses for a letter grade with a min. GPA of 2.00 in their major, including a <u>minimum of 9 separate Upper-Division courses</u>. Cumulative GPA also must be 2.00 or above.</p> <p>16) Total Units needed to Grad. ➔ 180.0</p> <p>Minus completed units - _____ (Last quarter completed)</p> <p>Remaining Units = _____</p> <p>Units in progress (IP) ➤ - _____ (Current quarter)</p> <p>Estimated units to complete = _____</p>

Disclaimer: It is your responsibility to retain copies of degree checks if you are not a declared major.

WHAT CAN I DO WITH A SOCIAL SCIENCES MAJOR?

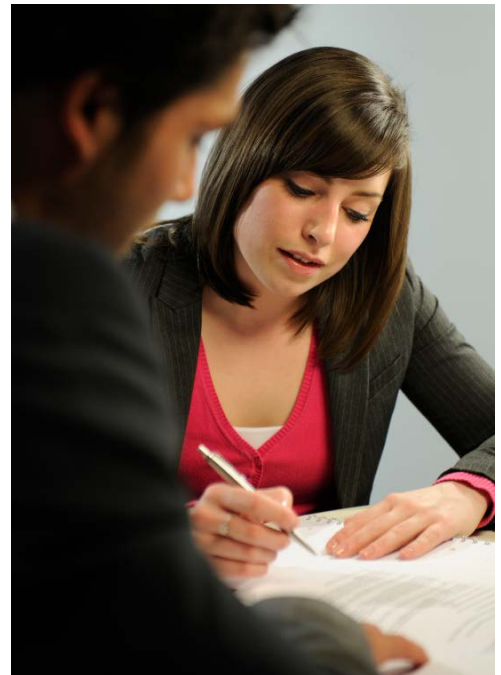
The list below represents a sampling of industries for Social Sciences majors and is not comprehensive.

Please visit the UC Career Center for assistance and to further research your options.

Bank/Finance <ul style="list-style-type: none"> - Credit Lending Systems - Trusts Insurance Business <ul style="list-style-type: none"> - Consulting - Retail Management - Human Resources - Public Relations - Sales/Marketing - Economist Education <ul style="list-style-type: none"> - Teaching - Research - Administration Government <ul style="list-style-type: none"> - Corrections - Foreign Service - Political/Economic Affairs - Rehabilitation - Urban/City Planning - Policy Analysis 	Law Enforcement <ul style="list-style-type: none"> - Special Agent - Computer Security - Forensic Investigations Health Care <ul style="list-style-type: none"> - Rehabilitation - Mental Health - Social Services Hospitality <ul style="list-style-type: none"> - Sales and Marketing - General Management - Food and Beverage Sales Human Services <ul style="list-style-type: none"> - Counseling - Mental Health - Case Management - Social Work - Community Relations 	Law <ul style="list-style-type: none"> - Paralegal - Public Administration - Judiciary - Lawyer Media/Entertainment <ul style="list-style-type: none"> - Writing/Editing - Advertising - Event Planning - Broadcasting - Journalism Travel and Tourism <ul style="list-style-type: none"> - Travel/Tour Consultant - Meeting/Convention - Planner Park - Superintendent Museums <ul style="list-style-type: none"> - Curator - Conservation - Libraries 	Non-Profit <ul style="list-style-type: none"> - Public Relations - Administration - Fund Raising - Policy Analysis - Development Politics <ul style="list-style-type: none"> - Public Interest - Legislative - Local/State/Federal - Lobby - Campaign Research <ul style="list-style-type: none"> - Market Research - Data Analysis - Demography - Education UCI Career Center 100 Student Services I Phone: (949) 824-6881 www.career.uci.edu
--	---	---	---

Strategies - These are a few suggestions to prepare you to successfully pursue your career:

1. Obtain an internship or volunteer position in your field of interest to gain experience and skills.
2. Get involved in campus clubs and organizations to develop leadership abilities and expand your network.
3. Attain research experience with a professor or department on campus for desired field.
4. Research occupations to find out education requirements, desired skills, salary, outlook and related jobs.
5. Maintain a good GPA and develop strong personal recommendations with supervisors and professors.
6. Become familiar with the hiring practices for your industry of interest.
7. Take specific classes or add a minor to specialize and advance your skills.
8. Get a full or part-time job to gain time management and customer service skills and responsibility.
9. Prepare for graduate school (if necessary) by researching schools and taking the required admissions tests (i.e. GRE, GMAT, LSAT, etc).
10. Visit the UCI Career Center to learn about choosing/changing your major, the job search process, selecting and applying to graduate school, internship opportunities, interviewing, and resume writing. Information available online <http://www.career.uci.edu> and in the UCI Career Center Library.



Change of Major Requirements

How do I change/declare/add my major?

You may change/declare/add your major once the quarter has started. However, each School on campus has specific policies and requirements regarding change of majors. It is in your best interest to inquire early as to these requirements. Academic Counselors and Peer Academic Advisors in each school will be able to assist you in this process.

Anthropology, Chicano/Latino Studies, International Studies, Political Science and Social Policy & Public Service

Requirements	Description
Cumulative UC GPA	2.00 GPA and 2.00 GPA for the quarter prior to changing major
Course grades	<ul style="list-style-type: none">Completion of at least five courses from the School of Social Sciences. Two of the five courses must be in the student's intended major. All five courses must have a GPA average of 2.00 or better with no grade less than a "C".Option available only for students with 60 or fewer units (excluding AP credits and other units earned prior to high school graduation): At least two courses with 2.3 or better in the student's intended major and no grade less than a "C".

Business Economics, Economics, Quantitative Economics

Requirements	Description
Cumulative UC GPA	2.00 GPA and 2.00 GPA for the quarter prior to changing major
Course grades	No grade below a "C" in Math 2A-B and Econ 20A-B, with an average of 2.50 GPA or above.

Psychology

Requirements	Description
Cumulative UC GPA	2.70 GPA for Option 1 or 2.00 GPA for Option 2 and 2.00 GPA for the quarter prior to changing major Completion of one of the following options:
Course grades	<ul style="list-style-type: none">Option 1: Two courses in Psychology with grades of "B-" or better in each course. One of the courses must be from Psychology 7A or 9A-B-C.Option 2: Psychology 9A-B-C and two Psychology core courses with a GPA of at least 3.00 for those five courses.

Sociology

Requirements	Description
Cumulative UC GPA	2.00 GPA and 2.00 GPA for the quarter prior to changing major
Course grades	Completion of at least five courses from the School of Social Sciences. Two of the five courses must be in Sociology. All five courses must have a GPA average of 2.30 or better with no grade less than a "C".

B. S. in Cognitive Sciences

Requirements	Description
Cumulative UC GPA	2.00 GPA and 2.00 GPA for the quarter prior to changing major
Course grades	<ul style="list-style-type: none">Must complete Math 2A, 2B, Stats 7 and either ICS 31 or PSYCH 114M with no grade less than a C+.PSYCH 9A-B-C no grade less than a C+.Students must maintain an overall grade point average of 3.0 for all courses with the major.

Note: the major is ideal for a student who has strong math and computer programming skills.

For further information, visit the department website at: <http://www.cogsci.uci.edu/bscogsci>

How many courses can I overlap if I am a double major or have a minor?

- Double major within the School of Social Sciences: 2 introductory level lower division courses
- One Social Sciences major and a major from another school: 2 courses
- Major in the School of Social Sciences and a minor from another school: 2 courses
- Major and a minor in the School of Social Sciences: **NO OVERLAP.**
- No course overlaps between minors

Minors

A minor consists of a coordinated set of courses (seven or more) which together take a student well beyond the introductory level in an academic field, subject matter, and/or discipline but which are not sufficient to constitute a major. An interdisciplinary minor consists of courses offered by two or more departments, schools, or programs. Generally, all minors are available to all students, with the following exceptions: (1) students may not minor in their major, and (2) students may not complete certain other major/minor combinations that are expressly prohibited, as noted in the Catalogue. Minors are listed on a student's transcript but not on the baccalaureate diploma. If interested, students should contact the School that houses the minor.

<p>CLAIRE TREVOR SCHOOL OF THE ARTS Digital Arts Studio Art</p> <p>SCHOOL OF BIOLOGICAL SCIENCES Biological Sciences</p> <p>THE PAUL MERAGE SCHOOL OF BUSINESS Accounting Management</p> <p>DEPARTMENT OF EDUCATION Educational Studies</p> <p>THE HENRY SAMUELI SCHOOL OF ENGINEERING Biomedical Engineering Materials Science Engineering</p> <p>COLLEGE OF HEALTH SCIENCES Public Health</p> <p>DONALD BREN SCHOOL OF INFORMATION AND COMPUTER SCIENCES Biomedical Computing Informatics Information and Computer Science Digital Information Systems Health Informatics Statistics</p>	<p>SCHOOL OF HUMANITIES African American Studies Archaeology Art History Asian American Studies Asian Studies Chinese Language and Literature Classical Civilization Comparative Literature English European Studies Film and Media Studies French German Studies Global Cultures Greek History Humanities and Law Italian Studies Japanese Language and Literature Jewish Studies Korean Literature and Culture Latin Latin American Studies Philosophy Portuguese Queer Studies Religious Studies Russian Studies Spanish Women's Studies</p>	<p>INTERDISCIPLINARY STUDIES Civic and Community Engagement Global Sustainability History and Philosophy of Science Native American Studies</p> <p>SCHOOL OF PHYSICAL SCIENCES Earth and Atmospheric Sciences Global Sustainability Mathematics</p> <p>SCHOOL OF SOCIAL ECOLOGY Criminology, Law and Society Environmental Design Psychology and Social Behavior Urban Studies Urban and Regional Planning</p> <p>SCHOOL OF SOCIAL SCIENCES Anthropology Chicano/Latino Studies Conflict Resolution Economics Hearing and Speech Sciences International Studies Linguistics Medical Anthropology Political Science Psychology Sociology</p>
---	--	---

Certificates

Anthropology

To help provide more focused undergraduate training in anthropology with real-world applications, the Department of Anthropology offers five certificate programs, open to all undergraduates regardless of major. Each is designed to complement a student's other coursework and to provide expertise in a specific area of anthropological inquiry.

For more information, please visit their website:

 www.anthropology.uci.edu/undergrad/cert.php

- Economy and Culture
- Gender Studies
- Global Studies
- Law and Policy
- Medical Anthropology

Sociology

The UCI Sociology Department offers undergraduate Sociology Majors the opportunity to earn up to four departmental certificates. Each certificate recognizes successful completion of a focused course of study in one of four areas.

For more information, please visit their website:

 www.sociology.uci.edu/undergrad/certificate/index.php

- Business, Economy, and Organizations
- Diversity and Inequality
- Global and International Sociology
- Social Problems & Public Policy

Chicano/Latino Studies

The Department of Chicano/Latino Studies offers the opportunity to earn up to three Departmental certificates. Each certificate recognizes successful completion of a focused course of study in one of three areas. Applications and notices of designated University or Departmental events, seminars, and colloquia pertaining to each certificate will be posted on the undergraduate bulletin board on the 3rd floor of Social Science Tower (outside of Social Science Tower 383) and online. The certificate program is available to all majors. For more information, please visit their website:

 www.chicanolatinostudies.uci.edu/undergrad/cert.php

- History and Culture
- Social Policy and Issues
- Chicano/Latino Community in a Global Context

Middle East Studies

This certificate recognizes intensive study and knowledge of various aspects of the Middle East region. It is designed for students who want to narrow their focus of study to a particular region in or culture, language, or religion and issues pertaining to the Middle East. Please contact Kristen Salsbury at 949-824-7161 for more information or visit the website:

 <http://goo.gl/wlHtr2>


Transfer Units

To receive credit or units for coursework completed outside of UCI, student must submit official sealed copies of the transcripts or records to UCI Admissions or the Social Sciences Undergraduate Student Affairs (SSUSA). For coursework taken at a 4-year university or out of state university, please contact SSUSA to have them evaluated by an academic counselor (Please refer to the “Petitions” section).

ASSIST

ASSIST is an online student-transfer information system that shows how course credits earned at California community colleges can be applied when transferred to the University of California, Irvine. ASSIST is the official repository of articulation for California’s public colleges and universities and provides the most accurate and up-to-date information about student transfer in California.

Steps:

1. Go to  www.assist.org.
2. Select your community college from a list of colleges and select a catalogue year.
3. Select “University of California, Irvine”.
4. Find courses
 - a. For lower division courses in your major, select your major.
 - b. For Breadth/General Education requirements, select “General Education/Breadth”

This website only lists which courses can be transferred if offered. Students must still refer to the community college’s website to find course schedules. Upon completion of the courses, students should request to have an official sealed copy of the transcript sent to UCI Admissions or the Social Sciences Undergraduate Student Affairs (SSUSA).

Courses taken at community colleges can only transfer units and subject credit. Community colleges only offer lower division courses, so all upper division courses must be taken at four year universities. Note that all math courses and major courses must be taken for grades. Refer to “Transcript Notations” for information about unauthorized repeats.

****For UC transferable courses, 1 semester unit is equivalent to 1.5 UC quarter units****

College Board Advanced Placement Exams

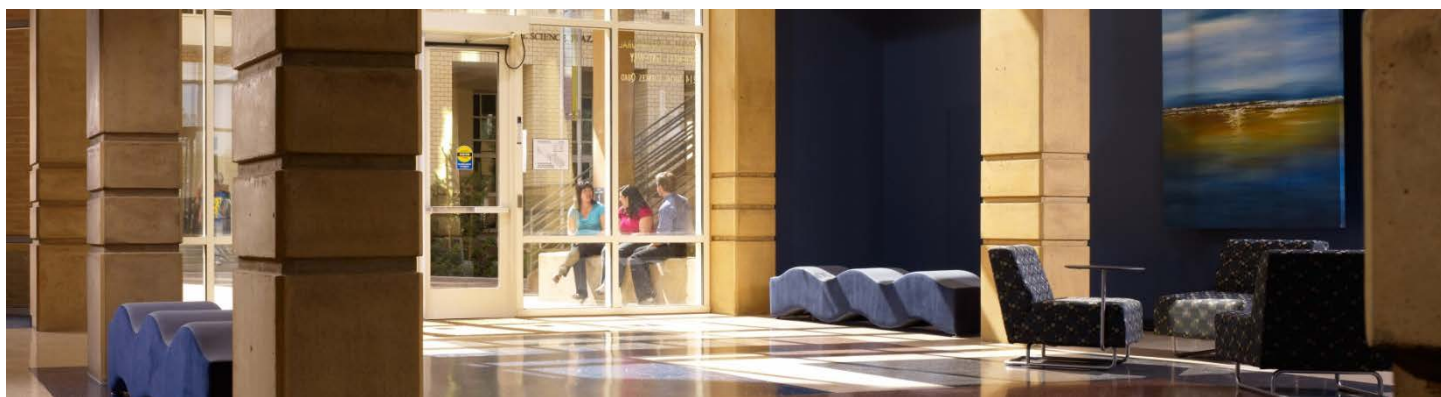
For a complete list of acceptable AP courses visit:

 www.admissions.uci.edu/applicants/ap_exams.html

International Baccalaureate Exams

For a complete list of acceptable international courses visit:

 www.admissions.uci.edu/applicants/ib_exams.html



Whom do I speak with? It depends on what you need! The School of Social Sciences does not assign specific advisors so you can meet with any one of our Academic Counselors or Peer Academic Advisors to find the answers you need.

Front Desk (Walk-In) A Peer Academic Advisor and an Academic Counselor to answer quick questions, direct you to the correct resource, schedule appointments with Academic Counselors, and provide forms regarding excess unit request, prerequisite clearance, change of majors, post-quarter add/drop/changes, and part-time student applications.

Peer Academic Advisors (Walk-In) Questions regarding unofficial degree checks, class schedules, general education, school, and major requirements, change of major process, petitions, and application to graduate.

- To talk to a Peer Academic Advisor you may come in during office hours for walk-in advising.

Academic Counselors (Appointment/Walk-In)

Official graduation degree check, petitions, academic contracts or if you have any sort of IGETC related questions.

Appointments with Academic Counselors are only scheduled for declared students who are majors in the School of Social Sciences. To schedule an appointment with an Academic Counselor please call (949) 824-6803.

Study Abroad Advising

- Prospective Education Abroad Program (EAP) participant- Can make an appointment to speak with a Study Abroad Advisor in our office to review courses for EAP. Bring copies of the course descriptions to have your courses evaluated once you have chosen one specific program.
- Prospective International Opportunities Program (IOP) participant- The IOP Advance Contract online must be evaluated by UCI Admissions **before** our office can evaluate the courses.
- EAP/IOP Returner- Call (949) 824-6803 to schedule an appointment with a Study Abroad Academic Counselor once grades have been posted on your UCI transcript (for EAP students) or official transcripts have been received (for IOP students). Make sure to bring course syllabi to the appointment.

Academic Probation / Contract

What are Academic Probation and Academic Contract? Good academic standing at UCI is maintaining quarterly and cumulative grade point averages (GPAs) of at least 2.00. If either GPA falls below 2.00, the student should contact the Social Sciences Undergraduate Student Affairs Office as soon as possible to determine their status and whether action is necessary to avoid disqualification. The two main phases before disqualification are Academic Probation and Academic Contract.

Academic Probation

When a student's quarterly GPA falls below 2.00 but their UC cumulative GPA is still above 2.00, the student is placed on Academic Probation. No action is taken but this serves as a warning.

Academic Contract

There are two situations which place a student on academic contract.

- Two consecutive quarterly GPAs below 2.00
- UC cumulative GPA below 1.8

An email will be sent to you regarding your Academic Contract. Do not ignore the email. It will serve as your contract if you do not come into the SSUSA to see an Academic Counselor. If you have any questions or would like to discuss the terms of the Academic Contract, please call to schedule an appointment at (949)824-6803.

If the student satisfies the terms of the Academic Contract, then the student may be off contract or the contract may be extended, depending on the student's overall progress. Meeting the terms of the Academic Contract ensures the student's eligibility to continue as a UCI student for the upcoming academic quarter.

If the student violates the contract, the record will be reviewed again to determine whether the student will be disqualified. The student in this situation should contact the SSUSA to determine their status as soon as possible.

Academic Dishonesty

ACADEMIC DISHONESTY is NOT TOLERATED so DON'T DO IT!

The UCI General Catalogue has an explanation of your responsibility to be academically honest as an undergraduate.

🌐 <http://catalogue.uci.edu/appendix/#academichonestytext>

All incidents of dishonesty are reported and recorded within the student's major, the academic unit that offers the course AND the campus-wide reporting system.

The following are examples of what is considered dishonest acts:

- **Cheating** - Looking at someone's test, giving someone your paper to look at or giving someone your test from a course.
- **Dishonest Conduct** - Stealing a test, forgery, having someone else do your work for you.
- **Plagiarism** - Copying from a source without proper notation (e.g. internet or book)
- **Collusion** - Knowingly and intentionally helping another student perform any of the above acts of cheating, plagiarism, or dishonest conduct.
- **Examples of consequences for dishonest acts**
 - ✓ Failing an assignment
 - ✓ Failing the course
 - ✓ Suspension from UCI
 - ✓ More than one incident, dismissed from UCI

Consequences are at the professor's discretion. Read the syllabus for more information.

View the following tutorial to learn more about plagiarism and academic dishonesty:

http://cast.oit.uci.edu/tltc/Production/TLTC/DUE_Plagiarism_Tutorial/Plag_Tutorial.htm

To learn more about Academic Honesty at UCI visit:

🌐 <http://catalogue.uci.edu/appendix/#academichonestytext>

Dean's Signature / Approval

Academic Counselors in the Social Sciences Undergraduate Student Affairs Office (SSUSA) are authorized to sign for the Dean of Social Sciences. Therefore, if any forms, including withdrawal, part-time student petition, etc. require the Dean's Signature, please come to the Social Sciences Undergraduate Student Affairs Office (SSUSA). Contact the Registrar for verifications of enrollment and grades.

Withdrawal

Undergraduate students who pay fees for a regular academic quarter and then decide to withdraw from the University must submit a Withdrawal form to the Office of the Registrar after obtaining the signature of their academic dean (available at the Social Sciences Undergraduate Student Affairs Office (SSUSA) for students affiliated in the School of Social Sciences). This form serves two purposes: (1) a refund of fees, if applicable; and (2) automatic withdrawal from all classes. The effective date of withdrawal is used in determining the percentage of fees to be refunded. A "W" grade will be recorded for each course in which enrollment is withdrawn if the student's effective date of withdrawal is after the end of the sixth week of classes.

New undergraduate students are encouraged to seek advice from their admissions or academic advisor to understand the consequences of withdrawal and their eligibility to return, before submitting the form (Please refer to the Readmission section).

If an undergraduate student plans to leave the University after completing all academic work for the latest quarter of enrollment and has not paid fees or enrolled for the next quarter, a formal notice of withdrawal is not necessary.

Readmission

All Students

Readmission is subject to Dean's signature/approval (available in the Social Sciences Undergraduate Student Affairs Office (SSUSA) for students affiliated with the School of Social Sciences) and campus deadlines (August 1 for Fall Quarter, November 1 for Winter Quarter, and February 1 for Spring Quarter). To apply for readmission, a student must first contact their academic advising office to request readmission and approval. The application is on-line and will be submitted by an academic counselor upon approval. The \$70 application fee will be added to a student's Zot Bill within two to three days of being approved for readmission.

New Undergraduate Students

New undergraduate students who cancel registration prior to the first day of the quarter must reapply to UCI; they are not eligible to file for readmission as described above.

Former UCI Students

Former UCI students who wish to be readmitted should contact the undergraduate advising office of the school or program which offers their intended major.

Poor Academic Standing

If a student has been academically disqualified from the University or has left the University while on probation or subject to disqualification, the student must apply for readmission. The application is subject to the approval of the Dean of the School which the student hopes to enter. Transcripts for work taken at other institutions must be submitted as part of the application.

Part-Time Student Status

A student with full-time student status must be enrolled in a minimum of 12 units. A student enrolled in less than 12 units will lose their full-time student status, but still pay the full-time fees unless a Petition for Reduced Fee Part- Time Study Program has been submitted by the deadline.

Readmission

All Students

Readmission is subject to Dean's signature/approval (available in the Social Sciences Undergraduate Student Affairs Office (SSUSA) for students affiliated with the School of Social Sciences) and campus deadlines (August 1 for Fall Quarter, November 1 for Winter Quarter, and February 1 for Spring Quarter). To apply for readmission, a student must first contact their academic advising office to request readmission and approval. The application is on-line and will be submitted by an academic counselor upon approval. The \$70 application fee will be added to a student's Zot Bill within two to three days of being approved for readmission.

New Undergraduate Students

New undergraduate students who cancel registration prior to the first day of the quarter must reapply to UCI; they are not eligible to file for readmission as described above.

Former UCI Students

Former UCI students who wish to be readmitted should contact the undergraduate advising office of the school or program which offers their intended major.

Poor Academic Standing

If a student has been academically disqualified from the University or has left the University while on probation or subject to disqualification, the student must apply for readmission. The application is subject to the approval of the Dean of the School which the student hopes to enter. Transcripts for work taken at other institutions must be submitted as part of the application.

Part-Time Student Status

A student with full-time student status must be enrolled in a minimum of 12 units. A student enrolled in less than 12 units will lose their full-time student status, but still pay the full-time fees unless a Petition for Reduced Fee Part- Time Study Program has been submitted by the deadline.

How long do I have to add/drop/change classes?

To drop or add or change the grading option on a course, you use WEBREG at

🌐 www.reg.uci.edu/registrar/soc/webreg.html

Dropping a Course

The deadline to DROP a course is Friday at 5:00 PM of week 2 in the current quarter.

Adding a Course

The deadline to ADD a course is Friday at 5:00 PM of week 2 in the current quarter.

Changing a Course Grading Option (Grade to Pass / No Pass or Pass / No Pass to Grade)

For majors in the School of Social Sciences, the deadline to change your grading option is by 5:00 PM of week 6 in the current quarter. The Dean's approval will not be given after week 6. Beginning week 3, change of grade option request must be submitted through Student Access and not WebReg.



When can I re-take a class? How many can I re-take?

Classes cannot be retaken unless the grade earned was a "C- or lower. The first 16 units retaken will replace the grades and units completely when calculated into the UCI GPA. The most recent grade will always replace the previous grade regardless of which grade is better, if it is within the first 16 units retaken. After the first 16 units, the old grade and the new grade will be averaged when calculated into the UCI GPA. The original and subsequent grades will all remain noted on the transcript.



Transcript Notations

UR - Unauthorized Repeat. If a student repeats a course for which a passing grade (“C” or better) has already been received and the course is not approved as repeatable for credit, the student will receive a —“UR” and no credit, grade, or units will be given.

“NR” — “No Record”. This turns into an “F” if it is not taken care of within one quarter.

“I” — “Incomplete”. This means that your professor did not have enough coursework to determine your grade. Incomplete grades are only issued to a student who for a medically documented reason or some other documented reason was unable to complete an assignment or exam. Once you make up the work within the time agreed upon by the instructor, you will be issued a grade. Effective Fall 2010, any Incomplete grades that have not been changed within three quarters will automatically lapse to a grade of “F” on your transcript. Note you do not enroll in the course again, but complete the work with the professor’s approval and then receive a grade change with the help of the SSUSA.

“W” – “Withdrew from Course”. This means that you dropped the course after the drop deadline.

Petitions

Students petition to receive credit for courses not preapproved on Assist.org or articulated in the catalogue.

Course Petition (additional paperwork or documentation required)

- Please bring in paperwork (i.e., course descriptions, syllabi, etc.) to our office.
- Fill out the paper petition in our office or the fillable document under “Office Forms” found here:

🌐 www.undergrad.socsci.uci.edu/policies/index.php
We will contact you by phone or email you with the results.

Prerequisite Clearance

Why can’t I enroll in a class, when I have met the prerequisites and am a major?

If you have a problem enrolling in a class and have met all prerequisites for the course, please come in to fill out a prerequisite clearance form or the fillable document found under “Office Forms” found here:

🌐 www.undergrad.socsci.uci.edu/policies/index.php

Students, especially transfer students, need to come in to fill out prerequisite clearance forms if prerequisites (lower division writing, psychology, economics, etc.) were taken at another school or other institution (ex. AP scores) for each quarter they have a class that requires those courses as prerequisites. Please come before your enrollment window opens to avoid any complications with enrollment.





Social Sciences Academic Resource Center (SSARC)

The Social Sciences Academic Resource Center was created over a decade ago to help School of Social Sciences students obtain the appropriate information to select a career and/or graduate school program, generate professional contacts and learn how to gain a competitive edge during their undergraduate years.

The Social Sciences Academic Resource Center provides valuable resources for undergraduates in the School of Social Sciences and is conveniently located across from the Social Sciences Office of Student Affairs in the Social and Behavioral Sciences Gateway building. Friendly and knowledgeable SSARC staff can guide you to the information you need in a relaxed, pleasant environment.

- Resume Critique
- Internship Workshop
- Research
- Leadership Opportunities
- Graduate School Information
- Statement of Purpose Workshop

Monday – Thursday 9:00 A.M. – 5:00 P.M.

Friday 9:00A.M. – 3:00P.M.

1230 Social & Behavioral Sciences Gateway

☎ Phone: (949) 824-8322

✉ E-mail: ssarc@uci.edu

🌐 www.socsci.uci.edu/ssarc

Learning and Academic Resource Center (LARC)

The Learning and Academic Resource Center provides services designed to help students acquire the skills they need to develop intellectually, become successful learners, and achieve their academic and professional goals. LARC staff and programs provide students with the personal contact and support needed for academic success on a large and diverse campus. The Center works closely with faculty to develop programs that meet both curricular objectives and the changing needs of students. LARC programs stress the development of academic abilities that all university students need regardless of major: effective study strategies, critical reading and analytical writing. The Center offers adjuncts classes, workshops, peer-tutoring groups, and individual counseling, including assistance in all forms of academic reading and writing.

Monday – Friday

8:00 A.M. – 5:00 P.M.

284 Rowland Hall

☎ Phone: (949) 824-6451

🌐 www.larc.uci.edu

UCI Writing Center

The Center for Excellence in Writing and Communication (or “Writing Center” for short) promotes effective writing and communication as lifelong skills. Not only are these skills necessary for personal and professional survival, they are also powerful ways in which people think through issues, consider multiple points of view and become more consciously aware of the world around them.

193 Ayala Science Library

☎ Phone: (949) 824-8949

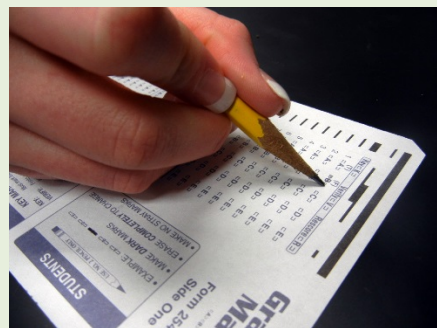
✉ E-mail: writing-center@uci.edu

🌐 <http://www.writingcenter.uci.edu/>

UCI Academic Testing Center

The UCI Academic Testing Center, a unit within the Division of Undergraduate Education, administers the Placement Testing Program to new and continuing students to ensure correct placement in selected introductory courses and to help students assess their readiness for University-level work. These tests are selected or developed by UCI faculty who also determine the grading criteria for each test. Students, with the help of academic counselors, use results from placement tests to determine enrollment in introductory courses and to formulate a plan of study that is best suited for their learning needs and career goals.

Placement tests are currently given in the areas of chemistry, physics, calculus, mathematical analysis, Chinese, Japanese, Korean, Vietnamese, Analytical Writing, and Academic English. The Academic Testing Center also administers the Language Testing Program. Tests are offered in over 40 languages and are administered 3 times during the academic year.



The Academic Testing Center participates with the Composition Program in the campus-based administration of the University of California Analytical Writing Placement Exam.

Monday – Friday

9:00 A.M. – 5:00 P.M.

3040 Anteater Instruction and Research Bldg

☎ Phone: (949) 824-6207

✉ Fax: (949) 824-3832

✉ E-mail: testcenter@uci.edu

🌐 www.testingcenter.uci.edu

UCI Career Center

Students are strongly encouraged to visit UCI's Career Center early in their academic career. The Center assists undergraduate and graduate students with career decision-making and career planning through individual counseling, workshops, career programs, career fairs, employment opportunities, and graduate and professional school information. Vocational interest inventories are also available on a fee-for-service basis. The center provides students many opportunities to connect with employers, alumni, and professional and graduate schools. The Center assists students seeking part-time and full-time employment opportunities, teaches job search skills and interviewing techniques; and provides job listings and offers an on-campus interview program (OCI).

Monday – Friday

8:00 A.M. – 5:00 P.M.

100 Student Services 1

☎ Phone: (949) 824-6881

✉ E-mail: career@uci.edu

🌐 www.career.uci.edu

Undergraduate Research Opportunities Program (UROP)

The Undergraduate Research Opportunities Program (UROP) in the Division of Undergraduate Education encourages and facilitates faculty-mentored research and creative activities by undergraduates from all schools and academic disciplines at UCI. UROP also collaborates with various schools and research units to develop specialized research opportunities. Conducting



research and creative activities has become an integral component of the education undergraduates receive at UCI, and provides students with the necessary skills to succeed in their future careers. Research opportunities are available not only from every discipline, interdisciplinary program, and school, but also from many outside agencies, including national laboratories, industrial partners, and other universities. Opportunities are listed on the UROP website, and distributed through various e-mails throughout the academic year. Students interested in receiving more information and individualized assistance are encouraged to contact the UROP Office to set up an advising appointment.

Through UROP's various programs, the UROP Team assists students through all phases of the research process, whether it is with proposal writing, developing research plans through project management skills, receiving grants to fund research projects, scholarly journal writing through The UCI Undergraduate Research Journal, or presenting results of the research or creative project through the UCI Undergraduate Research Symposium.

Monday – Friday

9:00 A.M. – 5:00 P.M.

2300 Student Services II

☎ Phone: (949) 824-4189

✉ Fax: (949) 824-1607

✉ E-mail: urop@uci.edu

🌐 www.urop.uci.edu

Counseling Center (Non-Academic)

The Counseling Center is here to provide the UCI community with a broad range of mental health support services. They include: individual, couples, and group counseling, urgent care, crisis response, consultation, and outreach programs.

The Counseling Center is committed to helping students achieve the maximum benefit from their UCI experience. The Center's intention is to support students in performing well academically, to assist them through developmental tasks associated with their college student years, and to learn how to be more effective in developing, maintaining, and negotiating relationships with others. The Center is also committed to managing psychological crises which arise as a result of students' inability to cope with the pressures associated with a stressful academic environment.

The services offered by the Counseling Center are free of charge and available to all currently enrolled students. Services can be grouped into four areas: counseling and psychotherapy; workshops; academic instruction; training and consultation.

The Counseling Center is open from 8am to 5pm, Monday through Friday for scheduled appointments and a counselor is always available on an urgent basis. If you would like to talk with someone or make an appointment for counseling services please call (949) 824-6457.

Monday – Friday
8:00 A.M. – 5:00 P.M.
203 Student Services I
☎ Phone: (949) 824-6457
🌐 www.counseling.uci.edu

Student Health Center

Effective Fall Quarter 2001, the Regents of the University of California instituted health insurance coverage as a condition of enrollment for all undergraduate students. This insurance is now included in your student fees and enrollment in the plan is automatic when you pay your fees. You may waive out of this plan if you can demonstrate comparable and verifiable

health coverage that meets the campus' minimum standards for insurance. (Refer to "Health Insurance") The Student Health Center is the primary care facility for students covered by the USHIP. In order to take advantage of your insurance plan, all medical care must begin at Student Health. If you need a medical service that we cannot provide, you will be referred to a qualified provider in the community. If you are a member of USHIP, the cost of your medical care will be billed directly to your insurance plan. Students who waive out of the plan, but use Student Health, will pay at the time of service and will be given an itemized receipt they may submit to their insurance carrier for reimbursement.

Monday, Tuesday and Friday
8:00A.M. – 5:00P.M.
Wednesday & Thursday
8:00A.M. – 7:00P.M.
New Saturday hours
9:00A.M. – 1:00P.M.
501 Student Health
☎ Phone: (949) 824-5301
☎ Fax: (949) 824-3033
🌐 www.shs.uci.edu



Dean of Students Student Life & Leadership

The mission of the Office of the Dean of Students is to provide services, programs, and facilities that enhance the quality of education by extending the learning environment beyond the classroom and into the co-curricular lives of UCI students. The Office of the Dean of Students promotes student participation in campus life and advocates for needs that are valued by students and validated by campus objectives.

The Office of the Dean of Students also promotes an active college lifestyle and encourages students to take advantage of opportunities to get involved with the university and student organizations. It is recommended, however, that all students maintain an awareness of balancing all aspects of college life and be educated about the programs with which they choose to participate.

Monday – Friday
8:00 A.M. – 5:00 P.M.
G308 Student Center
☎ Phone: (949) 824-5181
☎ Fax: (949) 824-3412
✉ E-mail: deanstu@uci.edu
🌐 www.studentlife.uci.edu

UCI Campus Organizations

🌐 <http://campusorgs.uci.edu/>

Study Abroad Center

The Study Abroad Center includes the Education Abroad Program (EAP) and the International Opportunities Program (IOP). Study Abroad Center is a comprehensive resource and counseling center which helps students take advantage of the many worldwide opportunities that exist for study, work, internship, volunteering, research, and non-credentialed teaching which relates to their degree programs at UCI.

Professional staff and international peer advisors, who have returned from an IOP or EAP experience, are available to guide students in making appropriate choices of international programs for their educational goals. Group and individual advising is available every day that UCI is in session.

Please refer to the EAP/IOP Preparation Guidelines on the next page.

Monday – Friday
9:00 A.M. – 4:00 P.M.
1100 Student Services II
(across Ring Road from the UCI Bookstore)
☎ Phone: (949) 824-6343
☎ Fax: (949) 824-9133
✉ E-mail: studyabroad@uci.edu
🌐 www.studyabroad.uci.edu

EAP/IOP Preparation Guide



Education Abroad Program (EAP)

1. Visit the Study Abroad Center and explore their website.
2. Consult EAP course catalog:
<https://myeap.eap.ucop.edu/Galileo/service/coursecatalog/Coursecatalog.aspx>
3. Print out all course descriptions
4. **OPTIONAL:** Make an appointment with a study abroad advisor in our office to review your courses.



International Opportunities Program (IOP)

1. Contact the Study Abroad Center for the link for online IOP Advance Contract
2. Complete the online IOP Advance Contract with all coursework you may take while abroad
3. Once it is reviewed by Admissions, a message is sent to an Academic Counselor who will review the information online.

Make sure to bring back the course syllabi for all courses taken abroad. Once the transcripts have been processed, please call (949) 824-6803 to schedule an appointment for the final evaluation with the Social Sciences Undergraduate Student Affairs.

UCDC / UC Sacramento

Academic Internship Programs

The UCDC Academic Internship Program is offered during the Fall, Winter, and Spring quarters. Students who intern in D.C. during the academic year combine internships with coursework or field research as full-time students. Financial aid eligibility is maintained and may also qualify for the Presidential Scholarship. Students from all majors are encouraged to apply. Juniors and Seniors with a minimum GPA of 3.0 is recommended. For more information on the UCDC Academic Internship Program, please visit:

www.dccenter.uci.edu

The UCDC Summer Internship Program sends students to Washington D.C. during the summer for experiential learning only. Each student admitted into the UCDC Summer Internship Program works closely with the Student Coordinators and Staff Advisors in preparation for the internship application and living experience in D.C. Students from all majors and class standing (including graduating seniors) are encouraged to apply. A minimum GPA of 2.5 is recommended.

The UCI Sacramento Internship Program allows students to experience and explore a wide variety of career opportunities available to them with the convenience of staying close to home (or without traveling out of state) this summer. It is an especially great program for those who are interested in public policy at the state level and want to be exposed to California laws and decisions up close. However, the internship opportunities are not limited to strictly political experiences. This Program is best for students who are looking for an Internship during the summer if they do not want to miss an academic quarter.

It is also not an academic program so there will be no coursework involved, however students may be able to receive units for their academic school. For more information, please visit:

www.statecap.uci.edu

Monday – Friday

Hours vary throughout each quarter
100 Student Services I

Phone: (949) 824-6886

www.ucdc.uci.edu

International Center (IC)

The International Center is a part of the Office of the Dean of Students at the University of California, Irvine. The IC staff counsels and assists international students, faculty, researchers, staff and scholars with immigration, orientation, employment and adjustment needs throughout their stay at the University of California, Irvine. In addition, the IC staff brings together international and American members of the UCI community for a variety of cultural, educational, social and recreational activities. The International Center helps visiting students, staff and scholars from other countries with any concerns that develop during their time at UCI. International students admitted to a UCI program of study and visiting international faculty, staff and scholars should address correspondence about immigration or other related concerns to the International Center.

Monday - Friday

8:00 A.M. – 5:00 P.M.

G302 UCI Student Center

Phone: (949) 824-7249

Fax: (949) 824-3090

E-mail: intl@uci.edu

www.ic.uci.edu



Cross-Cultural Center (CCC)

The mission of the Cross-Cultural Center (CCC) is to provide opportunities for University of California, Irvine students to affirm their cultural identities, develop their leadership skills, learn about UCI's various multicultural communities, and take active approaches in creating a socially just campus community. We strive to create and maintain meaningful dialogues and interactive programs across and between all cultures, particularly those of underrepresented, underserved, and underprivileged backgrounds. We provide a network of support for our diverse students in order to enhance their personal, social, cultural, and academic wellbeing, and promote an environment that encourages intellectual exchange, civility, and the responsible exercise of individual expression.

Monday – Friday

8:00 A.M. – 5:00 P.M.

☎ Phone: (949) 824-7215

📠 Fax: (949) 824-3056

🌐 www.ccc.uci.edu

Registration (WebReg)

🌐 www.reg.uci.edu/registrar/soc/webreg.html

Schedule of Classes (WebSOC)

🌐 <http://websoc.reg.uci.edu/perl/WebSoc>

Student Access

🌐 www.reg.uci.edu/access/student/welcome/

Campus Operator

☎ Phone: (949) 824-5011

Admissions Office

Monday – Friday

8:00 A.M. – 5:00 P.M.

260 Aldrich Hall

☎ Phone: (949) 824-6703

📠 Fax: (949) 824-2951

🌐 www.admissions.uci.edu

Financial Aid Office

Monday – Friday 10:00 A.M. – 5:00 P.M. 102 Aldrich Hall

☎ Phone: (949) 824-8262

📠 Fax: (949) 824-4876

🌐 www.ofas.uci.edu

Housing Services

Monday – Friday

8:00 A.M. – 5:00 P.M.

G465 Student Center

☎ Phone: (949) 824-7247

✉ E-mail: housing@uci.edu

🌐 www.housing.uci.edu

Office of the Registrar

Monday – Friday

8:00 A.M. – 5:00 P.M.

215 Aldrich Hall

☎ Phone: (949) 824-6124

📠 Fax: (949) 824-7896

✉ E-mail: registrar@uci.edu

🌐 www.reg.uci.edu

Central Cashier

Monday – Friday

8:00 A.M. – 5:00 P.M.

228 Aldrich Hall

☎ Phone: (949) 824-6916

📠 Fax: (949) 824-3252

✉ E-mail: cashiers@uci.edu

🌐 www.fs.uci.edu/QS

🌐 <https://zotaccount.uci.edu/>

Campus Billing

Monday - Friday

8:30 A.M. – 1:00 P.M. and 2:00 P.M. - 4:30 P.M.

101 Aldrich Hall

☎ Phone: (949) 824-2455

📠 Fax: (949) 824-9807

✉ E-mail: cbs@uci.edu

🌐 www.fs.uci.edu/CBS/Cbs_home.htm

Campuswide Honors Program Office

Monday – Friday

8:00 A.M. – 5:00 P.M.

1100 Student Services II

☎ Phone: (949) 824-5461

📠 Fax: (949) 824-2092

✉ E-mail: honors@uci.edu

🌐 www.honors.uci.edu

Disability Services Center

Monday – Friday

8:00 A.M. – 5:00 P.M.

100 Disability Services Center, Bldg 313

☎ Phone: (949) 824-7494

☎ TDD: (949) 824-6272

📠 Fax: (949) 824-3083

✉ E-mail: dsc@uci.edu

🌐 www.disability.uci.edu

The Hill (UCI Bookstore)

Monday – Thursday (8:00 A.M. – 7:00 P.M.)

Friday (8:00 A.M. – 5:00 P.M.)

Saturday (12:00 A.M. – 5:00 P.M.)

Sunday (Closed)

210-B Student Center

☎ Phone: (949) 824-2665

✉ E-mail: books@uci.edu

🌐 www.book.uci.edu